

APP CRS
085°

Rwy Idg
TDZE
Apt Elev

5797
808
841

RNAV (RNP) Z RWY 8

FULTON COUNTY AIRPORT-BROWN FIELD (F'TY)

RNP AR APCH.

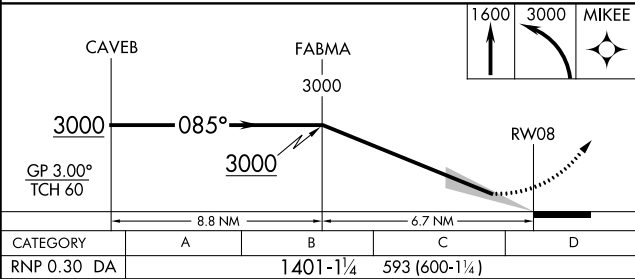
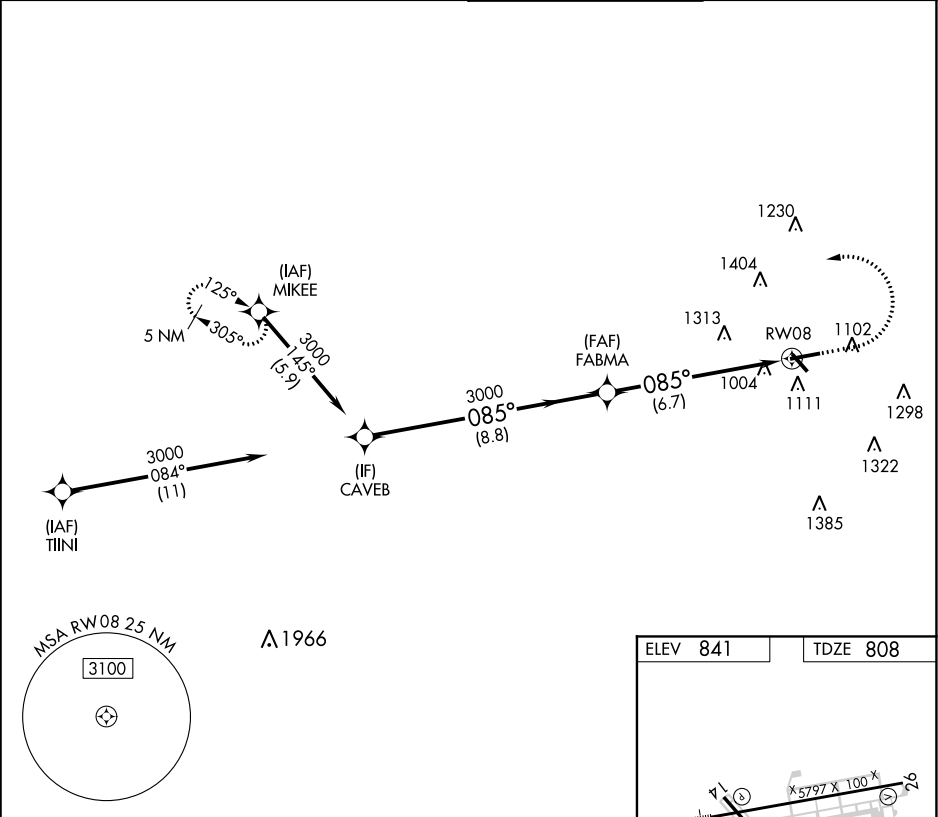
▼

For uncompensated Baro-VNAV systems, procedure NA below -11°C or above 54°C. Ridge with trees to 1299' MSL between FAF and runway threshold may be obscured by clouds even with airfield ceiling at or above procedure minimums.

MALSR

MISSED APPROACH: Climb to 1600 then climbing left turn to 3000 direct MIKEE and hold.

ATIS 120.175	ATLANTA APP CON 121.0 268.7	FULTON COUNTY TOWER 118.45 257.8	GND CON 121.7 348.6
------------------------	---------------------------------------	--	-------------------------------



CATEGORY	A	B	C	D
RNP 0.30 DA		1401-1¼	593 (600-1¼)	

ELEV 841

TDZE 808

HIRL Rwy 8-26

MIRL Rwy 14-32

REIL Rws 14, 26 and 32