

VOR/DME OTK 114.8 Chan 95	APP CRS 338°	Rwy Idg 8002 TDZE 200 Apt Elev 203
---	------------------------	---

VOR RWY 35
VALDOSTA RGNL (VLD)

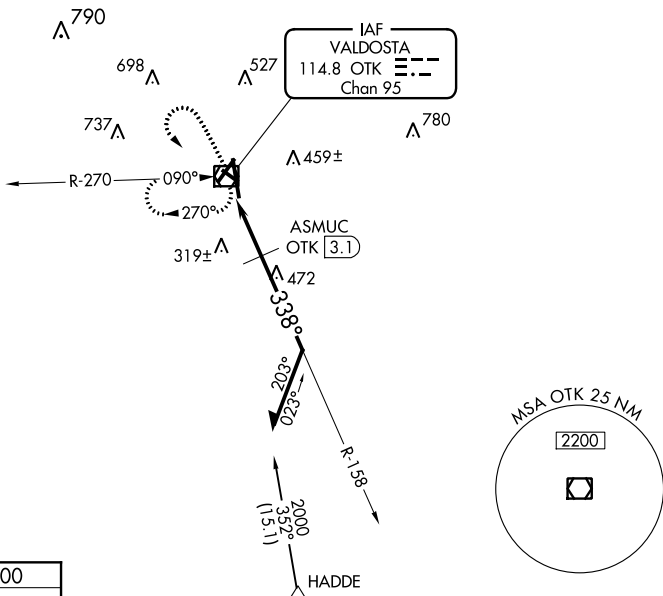
For inop ALS, increase S-35 Cats A/B visibility to 1 SM. ASMUC FIX MINIMUMS: Increase S-35 Cats A/B/C visibility to 1 SM and Cat D to ½ SM. Rwy 35 helicopter visibility reduction below ¾ SM NA. VDP NA with Moultrie altimeter setting. When local altimeter setting not received, use Moultrie altimeter setting and increase all MDAs 100 feet and increase all Cat C/D visibilities ½ SM. Circling Rwy 4, 13, 31 NA at night.

MALSR

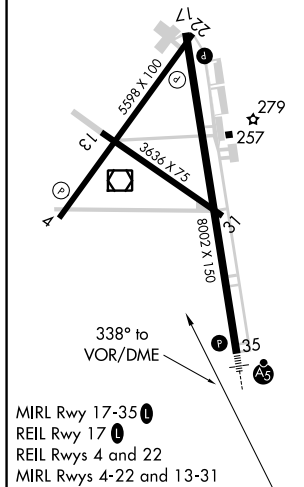


MISSED APPROACH: Climb to 1200 then climbing left turn to 2000 direct OTK VOR/DME and hold, continue climb-in-hold to 2000.

ASOS 126.225	VALDOSTA APP CON ★ 126.6 285.6	VALDOSTA TOWER ★ 120.9 (CTAF) 0	GND CON 121.7	UNICOM 122.95
-----------------	-----------------------------------	------------------------------------	------------------	------------------



ELEV 203	TDZE 200
----------	----------



1200 2000 OTK

*880 when using Moultrie altimeter setting.

OTK VOR/DME

158°

ASMUC

OTK 1.9

OTK 3.1

1800

338°

*780

0.8 1 NM 1.3 NM

Remain within 10 NM

CATEGORY	A	B	C	D
S-35	780- ³ / ₄	580 (600- ³ / ₄)	780-1 580 (600-1)	780-1 ¹ / ₄ 580 (600-1 ¹ / ₄)
CIRCLING	780-1	577 (600-1)	780-1 ¹ / ₂ 577 (600-1 ¹ / ₂)	780-2 577 (600-2)
ASMUC FIX MINIMUMS				
S-35	580- ³ / ₄ 380 (400- ³ / ₄)			580-1 380 (400-1)
CIRCLING	640-1 437 (500-1)	660-1 457 (500-1)	660-1 ¹ / ₂ 457 (500-1 ¹ / ₂)	780-2 577 (600-2)