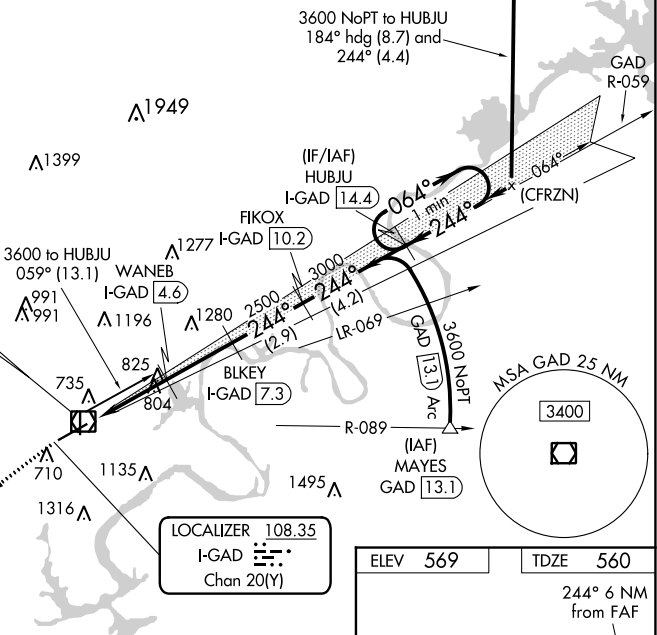



ILS or LOC RWY 24
NORTHEAST ALABAMA RGNL (GAD)

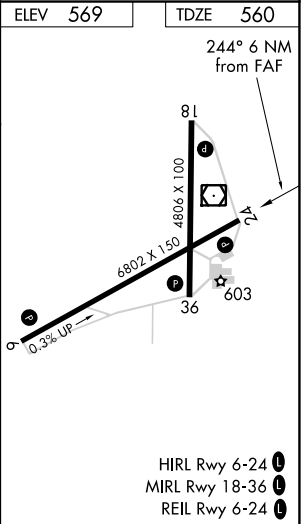
MISSED APPROACH: Climb to 3600 on GAD VOR/DME R-231 to STAMP/GAD 10 DME and hold, continue climb-in-hold to 3600.

AWOS-3PT 127.825	BIRMINGHAM APP CON 125.45 279.65	CLNC DEL 120.05 257.7	UNICOM 122.8 (CTAF) 0
----------------------------	--	---------------------------------	---------------------------------

DME REQUIRED



LOCALIZER 108.35
I-GAD 
Chan 20(Y)

[illegible]

SE-4, 03 DEC 2020 to 31 DEC 2020