

WAAS	APP CRS	Rwy Idg	4806
CH 90500	183°	TDZE	553
W18A		Apt Elev	569

RNAV (GPS) RWY 18

NORTHEAST ALABAMA RGNL (GAD)

RNP APCH.

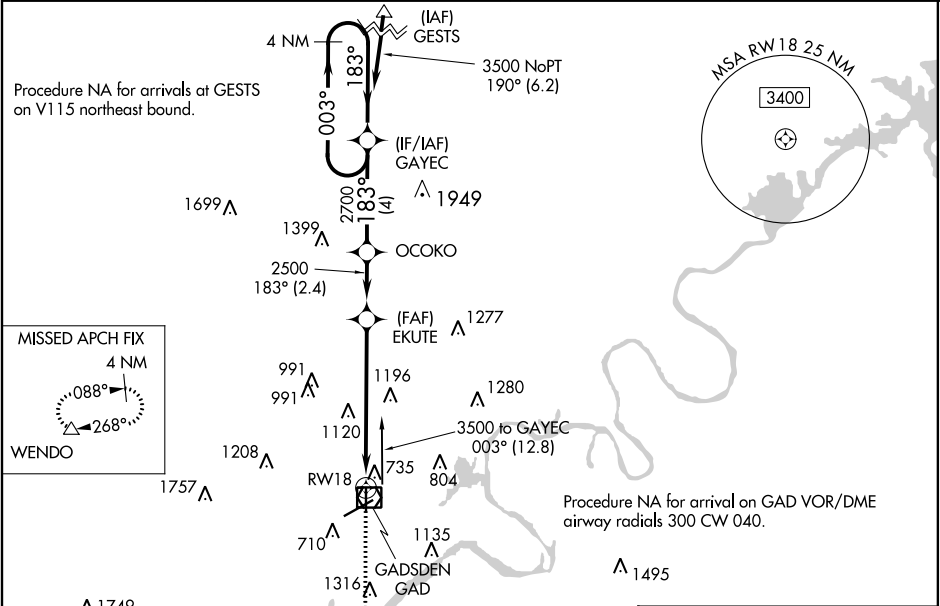
▼

⚠

Baro-VNAV NA when using Anniston altimeter setting. For uncompensated Baro-VNAV systems, LNAV/VNAV NA below -16°C or above 54°C. Rwy 18 helicopter visibility reduction below ¾ SM NA. When local altimeter not setting received, use Anniston altimeter setting and increase all DAs 66 feet and all MDAs 80 feet.

MISSED APPROACH: Climb to 3600 direct HORPO and on track 268° to WENDO and hold.

AWOS-3PT 127.825	BIRMINGHAM APP CON 125.45 279.65	CLNC DEL 120.05 257.7	UNICOM 122.8 (CTAF) 0
---------------------	-------------------------------------	--------------------------	--------------------------



ELEV 569		TDZE 553	
----------	--	----------	--

183° to RW18

VGSI and RNP glidepath not coincident (VGSI Angle 2.75/TCH 42).	3600	HORPO	WENDO
4 NM	GAYEC	OCOKO	
3500	← 003°	183° →	183°
GP 3.00°		2700	
TCH 40		2500	
	4 NM	2.4 NM	6 NM

CATEGORY	A	B	C	D
LPV DA		847-1	294 (300-1)	
LNAV/VNAV DA		1539-4	986 (1000-4)	
LNAV MDA	1560-1¼ 1007 (1000-1¼)	1560-1½ 1007 (1000-1½)	1560-3	1007 (1000-3)
CIRCLING	1560-1¼ 991 (1000-1¼)	1560-1½ 991 (1000-1½)	1560-3 991 (1000-3)	1680-3 1111 (1200-3)

HIRL Rwy 6-24 0

MIRL Rwy 18-36 0

REIL Rwy 6-24 0