

WAAS CH 65905 W24A	APP CRS 244°	Rwy Idg TDZE Apt Elev	6802 560 569
--	------------------------	-----------------------------	---

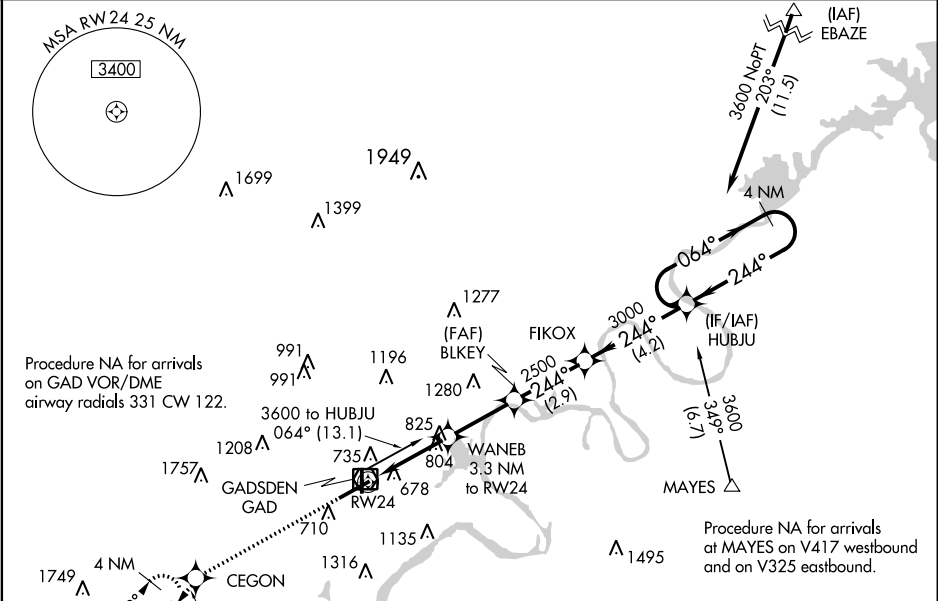
RNAV (GPS) RWY 24
NORTHEAST ALABAMA RGNL (GAD)

RNP APCH.

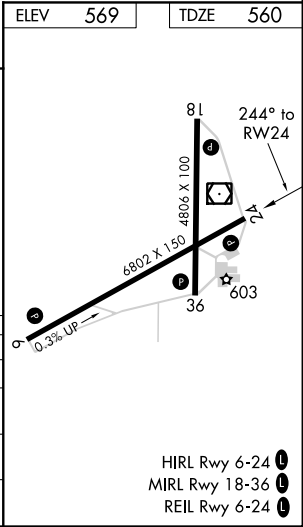
▼ For uncompensated Baro-VNAV systems, LNAV/VNAV NA below -16°C or above 54°C .
▲ When local altimeter setting not received, use Annonisn altimeter setting and increase all DAs 66 feet and increase all MDAs 80 feet; increase LPV all Cats visibility ½ SM, and increase LNAV Cats C/D and Circling Cat C visibility ¼ SM. Baro-VNAV and VDP NA when using Annonisn altimeter setting.

MISSED APPROACH: Climb to 3600 direct CEGON and on track 221° to STAMP and hold, continue climb-in-hold to 3600.

AWOS-3PT 127.825	BIRMINGHAM APP CON 125.45 279.65	CLNC DEL 120.05 257.7	UNICOM 122.8 (CTAF) 0
----------------------------	--	---------------------------------	---------------------------------



030° 218° 221° STAMP					
3600 ↑	CEGON ✦	tr 221°	STAMP △		
* LNAV only.				4 NM Holding Pattern	
WANEb 3.3 NM to RW24		BLUEJ 2500	FIKOX	HUBJU	
* 1.7 NM to RW24		244° 3000		064° → ← 244°	3600
RW24		* 1620	2500	GP 3.00° TCH 43	
1.7 NM 1.6 NM 2.7 NM 2.9 NM 4.2 NM					
CATEGORY	A	B	C	D	
LPV DA	781-3/4		221 (300-3/4)		
LNAV/ VNAV	DA	1016-1 5/8		456 (500-1 5/8)	
LNAV MDA	1140-1	580 (600-1)		1140-1 3/4	580 (600-1 3/4)
CIRCLING	1140-1	571 (600-1)		1140-1 3/4 571 (600-1 3/4)	1140-2 571 (600-2)



SE-4, 03 DEC 2020 to 31 DEC 2020

SE-4, 03 DEC 2020 to 31 DEC 2020