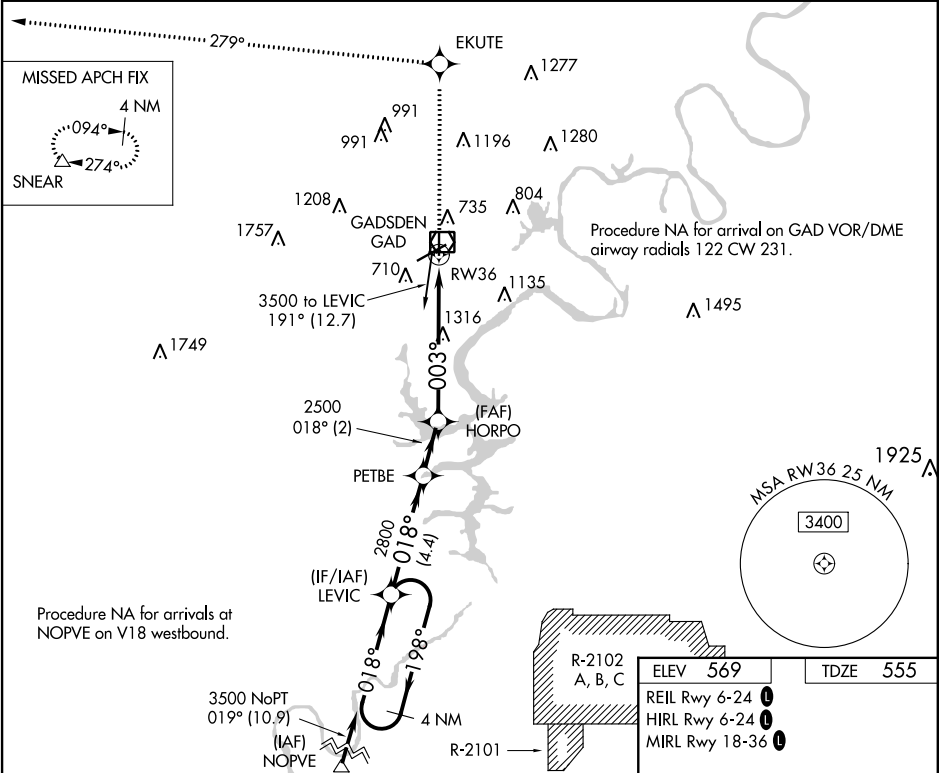


WAAS CH 90224 W36A	APP CRS 003°	Rwy Idg TDZE Apt Elev	4806 555 569
--	------------------------	-----------------------------	---

RNAV (GPS) RWY 36
NORTHEAST ALABAMA RGNL (GAD)

RNP APCH.		MISSED APPROACH: Climb to 3500 direct EKUTE and on track 279° to SNEAR and hold.	
When local altimeter setting not received, use Anniston altimeter setting and increase all MDAs 80 feet. Rwy 36 helicopter visibility reduction below ¾ SM NA.			
AWOS-3PT 127.825	BIRMINGHAM APP CON 125.45 279.65	CLNC DEL 120.05 257.7	UNICOM 122.8 (CTAF) 0



VGSI and descent angles not coincident (VGSI Angle 2.75/TCH 40).				3500	EKUTE	tr 279°	SNEAR
4 NM Holding Pattern				LEVIC	PETBE	HORPO	RW36
3500 ← 198°				018° →	018°	2800	3.00° TCH 40
						2500	003°
							6 NM
CATEGORY	A	B	C	D			
LP MDA	1600-1¼ 1045 (1100-1¼)	1600-1½ 1045 (1100-1½)	1600-3	1045 (1100-3)			
LNAV MDA	1640-1¼ 1085 (1100-1¼)	1640-1½ 1085 (1100-1½)	1640-3	1085 (1100-3)			
CIRCLING	1640-1¼ 1071 (1100-1¼)	1640-1½ 1071 (1100-1½)	1640-3	1680-3			