

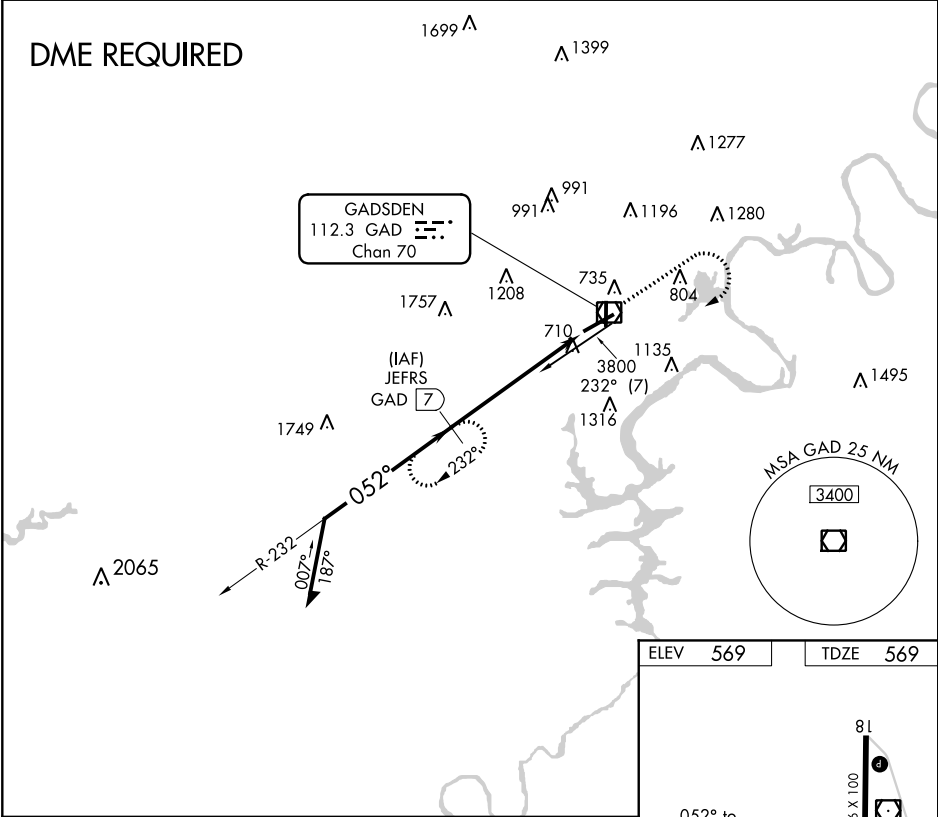
VOR/DME GAD	APP CRS	Rwy Idg	6802
112.3	052°	TDZE	569
Chan 70		Apt Elev	569

VOR RWY 6
NORTHEAST ALABAMA RGNL (GAD)

⚠ When local altimeter setting not received, use Anniston altimeter setting and increase all MDAs 80 feet; increase S-6 Cat C/D visibility ¼ mile and Circling Cat C ½ SM. VDP NA when using Anniston altimeter setting. DME required.

MISSED APPROACH: Climb to 2000 then climbing right turn to 3500 on GAD VOR/DME R-232 to JFRS/7 DME and hold.

AWOS-3PT 127.825	BIRMINGHAM APP CON 125.45 279.65	CLNC DEL 120.05 257.7	UNICOM 122.8 (CTAF) 0
---------------------	-------------------------------------	--------------------------	---------------------------------



Remain within 10 NM		JEFRS GAD 7		2000 ↑	3500 ↷ GAD R-232	JEFRS GAD 7
3100		232°		GAD 2.2		↷ GAD 1.1
052°		3.02°		TCH 40		
2500		4.8 NM		1.1		
CATEGORY	A	B	C	D		
S-6	960-1	391 (400-1)	960-1½	391 (400-1½)		
CIRCLING	1100-1	531 (600-1)	1440-2½ 871 (900-2½)	1680-3 1111 (1200-3)		

ELEV	569	TDZE	569
052° to VOR/DME			
0.3% UP			
HIRL Rwy 6-24 0			
MIRL Rwy 18-36 0			
REIL Rwy 6-24 0			
FAF to MAP 5.9 NM			
Knots	60	90	120 150 180
Min:Sec	5:54	3:56	2:57 2:22 1:58