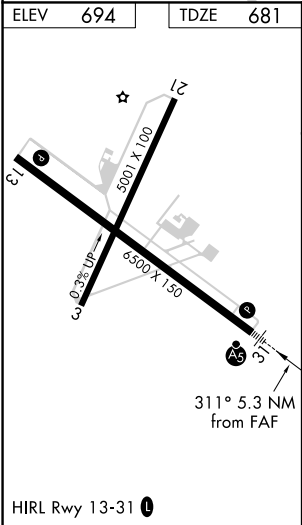
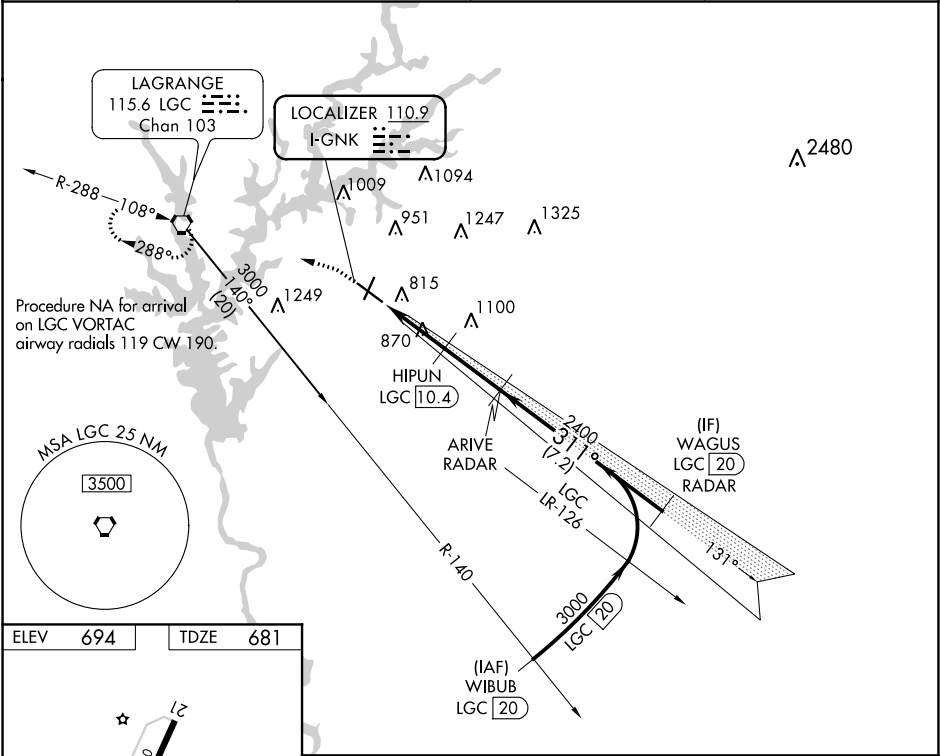





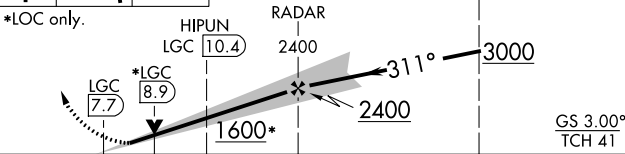

LOC I-GNKG <b>110.9</b>	APP CRS <b>311°</b>	Rwy ldg TDZE Apt Elev <b>6500</b> <b>681</b> <b>694</b>
----------------------------	------------------------	--

ILS or LOC RWY 31  
LAGRANGE-CALLAWAY (LGC)

DME required for procedure entry. RADAR and DME required for LOC only.	MALSR 	MISSED APPROACH: Climb to 1200 then climbing left turn to 2400 direct LGC VORTAC and hold.
Circling Rwy 13, 21 NA at night. DME from LGC VORTAC. Simultaneous reception of I-GNKG and LGC DME required.		

AWOS-3 <b>126.325</b>	ATLANTA APP CON★ <b>125.5 323.1</b>	CLNC DEL <b>119.25</b>	UNICOM <b>122.975</b> (CTAF)
--------------------------	--	---------------------------	---------------------------------



1200	2400	LGC	WAGUS LGC 20 RADAR	
				
*LOC only.				
				
CATEGORY	A	B	C	D
S-ILS 31	881-½		200 (200-½)	
S-LOC 31	1120-½	439 (500-½)	1120-¾	439 (500-¾)
 CIRCLING	1280-1	586 (600-1)	1540-2½ 846 (900-2½)	1600-3 906 (1000-3)

SE-4, 03 DEC 2020 to 31 DEC 2020

SE-4, 03 DEC 2020 to 31 DEC 2020