

WAAS CH <b>69243</b> <b>W03A</b>	APP CRS <b>028°</b>	Rwy Idg <b>5001</b> TDZE <b>684</b> Apt Elev <b>694</b>
--	------------------------	---

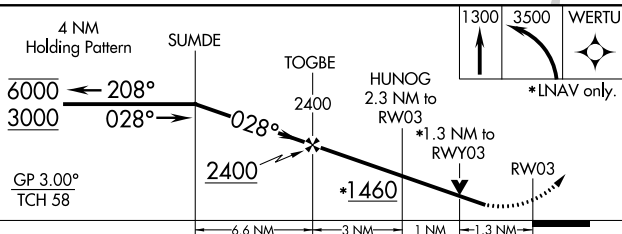
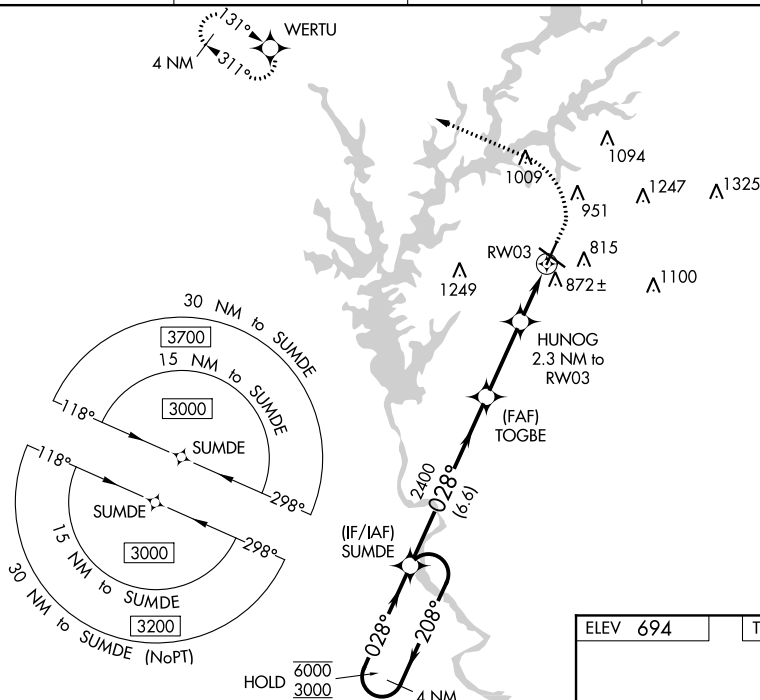
RNAV (GPS) RWY 3  
LAGRANGE-CALLAWAY (LGC)


RNP APCH.

- T** Circling Rwy 13, 21 NA at night.  
**A** Rwy 3 helicopter visibility reduction below  $\frac{3}{4}$  SM NA.  
 For uncompensated Baro-VNAV systems, LNAV/VNAV NA  
 below  $-16^{\circ}\text{C}$  or above  $54^{\circ}\text{C}$ .

**MISSED APPROACH:** Climb to 1300 then climbing left turn to 3500 direct WERTU and hold, continue climb-in-hold to 3500.

AWOS-3 <b>126.325</b>	ATLANTA APP CON★ <b>125.5 323.1</b>	CLNC DEL <b>119.25</b>	UNICOM <b>122.975 (CTAF) ①</b>
--------------------------	--	---------------------------	-----------------------------------



CATEGORY		A		B		C		D	
LPV	DA			1064-1		380 (400-1)			
LNNAV/ VNAV	DA			1044-1		360 (400-1)			
LNNAV MDA		1140-1		456 (500-1)		1140-1 $\frac{3}{8}$		456 (500-1 $\frac{3}{8}$ )	
	CIRCLING	1280-1		586 (600-1)		1540-2 $\frac{1}{2}$ 846 (900-2 $\frac{1}{2}$ )		1600-3 906 (1000-3)	

