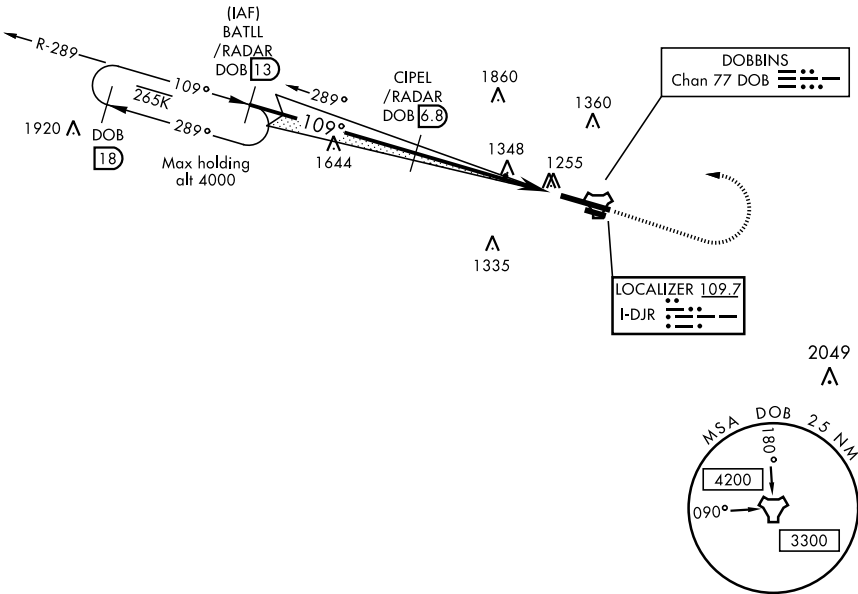


ILS or LOC RWY 11

LOC I-DJR 109.7	APCH CRS 109°	Rwy ldg 10,002 TDZE 1069 Arprt Elev 1069	AL-959 [USAF]	DOBBINS ARB (KMGE)
DME required. * When ALS inop, increase RVR to 55 and vis to 1 mile. ** When ALS inop, increase CAT AB RVR to 55 and vis to 1 mile, CAT CDE vis to 1½ miles.			ALSf-1 	† MISSED APPROACH: Climb to 2000 track 109°, then climbing left turn to 3000, intercept the DOB TACAN R-289 to BATLL and hold.
ATIS ★ 269.5	ATLANTA APP CON 121.0 268.7	DOBBINS TOWER ★ 120.75 370.875	GND CON 125.3 275.8	ASR

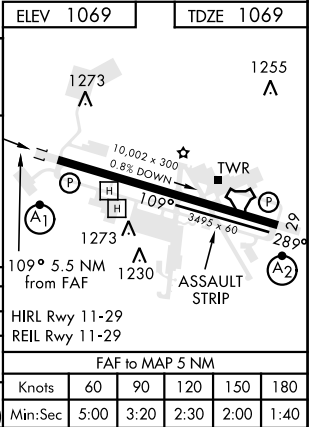
*** Circling not authorized N of Rwy 11-29 for CAT DE aircraft, Circling to assault strip not authorized.

† Missed approach requires use of RNAV or ATC RADAR monitoring.



EMERG SAFE ALT 100 NM 7700

BATLL DOB R-289 /RADAR (13)		CIPEL /RADAR (6.8)	† LOC only	2000 tr 109°	3000	BATLL DOB (13)
3000		2883				
GS 3.00° TCH 57		2900				
		5 NM		5 NM		
CATEGORY	A	B	C	D	E	
S-ILS 11*	1401/40		332	(400-¾)		
S-LOC 11**	1600/40 531 (600-¾)		1600/55 531	(600-1)		
*** CIRCLING	1660-1 591 (600-1)		1700-1¾ 631 (700-1¾)	1700-2 631 (700-2)	1700-2¼ 631 (700-2¼)	



ILS or LOC RWY 11

SE-4, 03 DEC 2020 to 31 DEC 2020

SE-4, 03 DEC 2020 to 31 DEC 2020