

ILS or LOC RWY 29

LOC 1-VRW 111.35	APCH CRS 289°	Rwy Idg 10,002 TDZE 1014 Aptd Elev 1069	AL-959 [USAF]	DOBBINS ARB (KMGE)
----------------------------	-------------------------	--	---------------	--------------------

DME required.

T * When ALS inop, increase CAT AB RVR to 55 and vis to 1 mile, CAT CDE vis to 1½ miles.
 ** Circling not authorized N of Rwy 11-29 for CAT DE aircraft. Circling to assault strip not authorized.

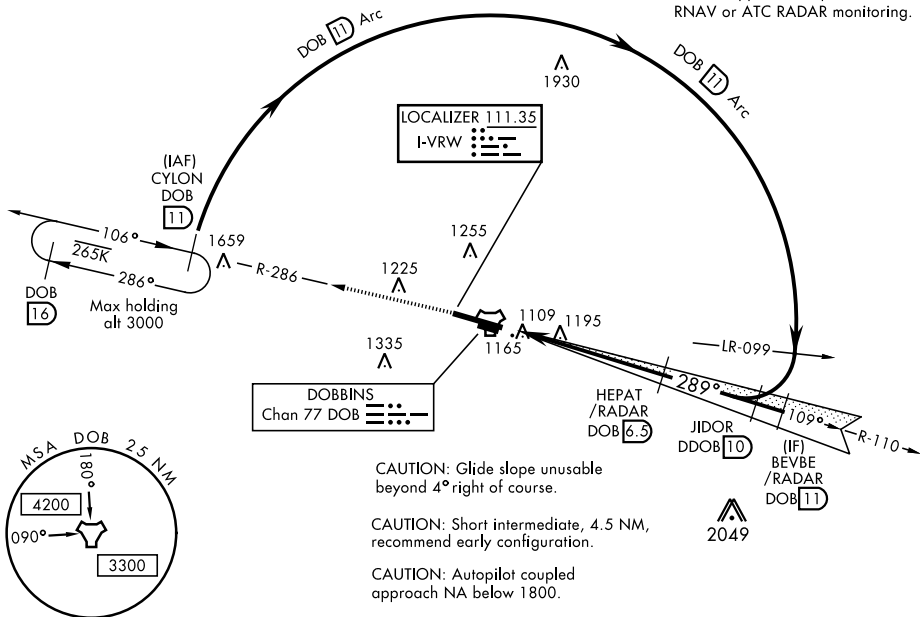
SALS

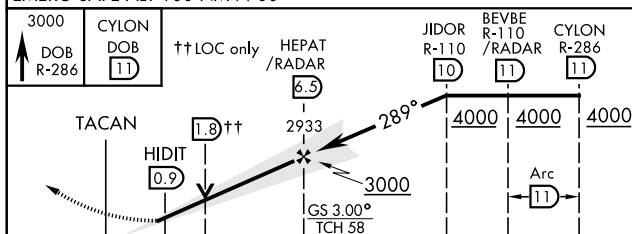
† MISSED APPROACH: Climb to 3000 via DOB TACAN R-286 to CYLON and hold.

ATIS ★ 269.5	ATLANTA APP CON 121.0 268.7	DOBBINS TOWER ★ 120.75 370.875	GND CON 125.3 275.8	ASR
-----------------	--------------------------------	-----------------------------------	------------------------	-----

† Missed approach requires use of RNAV or ATC RADAR monitoring.



EMERG SAFE ALT 100 NM 7700



	.5 NM	5.6 NM			
CATEGORY	A	B	C	D	E
S-ILS 29	121°40'		200	(200-¾)	
S-LOC 29*	1500/40	486 (500-¾)	1500/60	486	(500-1½)
C CIRCLING **	1660-1	591 (600-1)	1700-1¾ 631 (700-1¾)	1700-2 631 (700-2)	1700-2¼ 631 (700-2¼)