

MARIETTA, GEORGIA

RNAV (GPS) RWY 11


APCH CRS	Rwy Idg	10,002
109°	TDZE	1069
	Arprt Elev	1069

AL-959 (USAF)

DOBBINS ARB (KMGE)

**⚠** \* When ALS inop, increase CAT AB RVR to 55 and vis to 1 mile, CAT CDE vis to 1 1/2 miles.  
\*\* Circling NA N of Rwy 11-29 for CAT DE aircraft. Circling to assault strip not authorized.

**ALSIF-1**

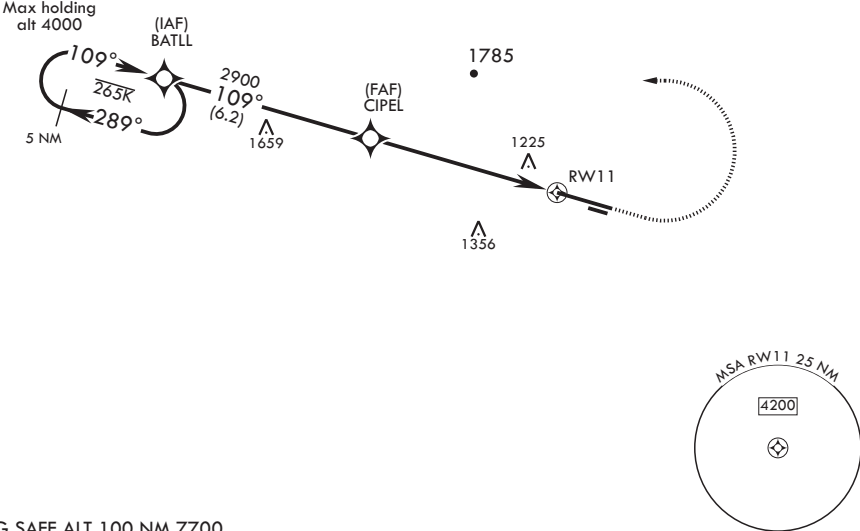


**† MISSED APPROACH:** Climb to 2000 then climbing left turn to 3000 direct BATLL and hold.

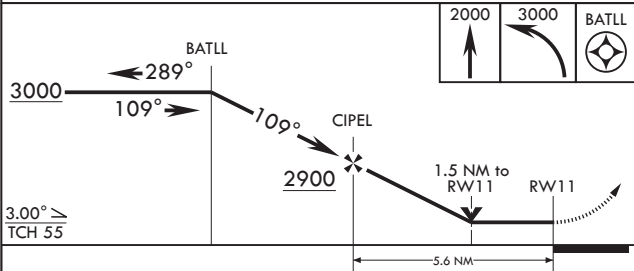
ATIS 269.5	ATLANTA APP CON/DEP CON 121.0 268.7	TOWER 120.75 370.875	GND CON 125.3 275.8	ASR
---------------	--	-------------------------	------------------------	-----

RNP APCH  
DME/DME RNP-0.3 NA

† Missed approach requires use of  
RNAV or ATC RADAR monitoring.

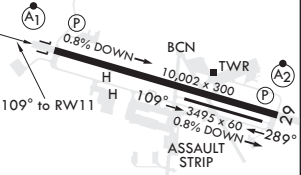


EMERG SAFE ALT 100 NM 7700



**2000** **3000** **BATLL**

**ELEV 1069** **TDZE 1069**



CATEGORY	A	B	C	D	E
LNAV MDA*	1600/40 531 (600-3/4)		1600/55 531 (600-1)		
<b>C</b> CIRCLING**	1660-1 591 (600-1)		1700-1 3/4 631 (700-1 3/4)	1700-2 631 (700-2)	1700-2 1/4 631 (700-2 1/4)

HIRL all Rwys  
REIL Rws 11, 29

MARIETTA, GEORGIA

33°55'N - 84°31'W

DOBBINS ARB (KMGE)

Amdt 1 05NOV20

RNAV (GPS) RWY 11

SE-4, 03 DEC 2020 to 31 DEC 2020

SE-4, 03 DEC 2020 to 31 DEC 2020