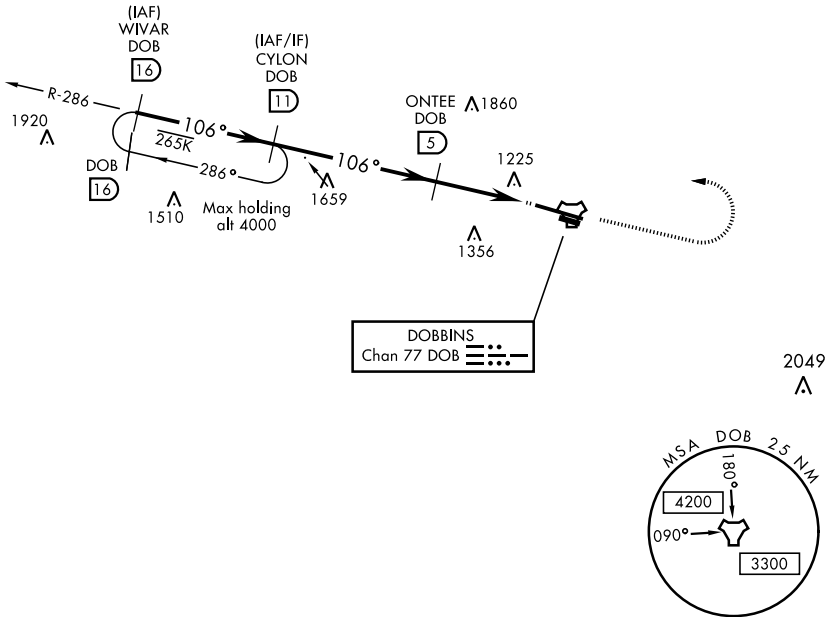


TACAN RWY 11

TACAN DOB Chan 77	APCH CRS 106°	Rwy ldg 10,002 TDZE 1069 Arprt Elev 1069	AL-959 [USAF]	DOBBINS ARB (KMGE)
▼ * When ALS inop, increase CAT AB RVR to 55 and vis to 1 mile, CAT CDE vis to 1½ miles. ** Circling not authorized N of Rwy 11-29 for CAT DE aircraft. Circling to assault strip not authorized.			ALSF-1 A1	† MISSED APPROACH: Climb to 2000 on track 106°, then climbing left turn to 3000, intercept DOB TACAN R-286 to CYLON and hold.

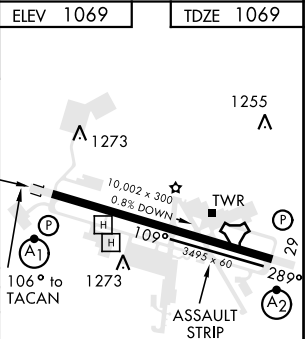
ATIS ★ 269.5	ATLANTA APP CON 121.0 268.7	DOBBINS TOWER ★ 120.75 370.875	GND CON 125.3 275.8	ASR
-----------------	--------------------------------	-----------------------------------	------------------------	-----

† Missed approach requires use of RNAV or ATC RADAR monitoring.



EMERG SAFE ALT 100 NM 7700

WIVAR R-286 [16]			CYLON [11]			2000 ↑ tr 106°		3000 ↶		CYLON DOB [11]		ELEV 1069		TDZE 1069	
3000			3000			106°		ONTEE [5]		2300					
						2.97° TCH 56									
								2.8 [2.8]		KAMSE [1.8]		TACAN			
								3.2 NM		.5 NM					
CATEGORY		A		B		C		D		E					



TACAN RWY 11