

VOR/DME AHN
109.6
Chan **33**

APP CRS
014°

Rwy Idg **3995**
TDZE **805**
Apt Elev **813**

VOR RWY 2
ATHENS/BEN EPPS (AHN)

⚠

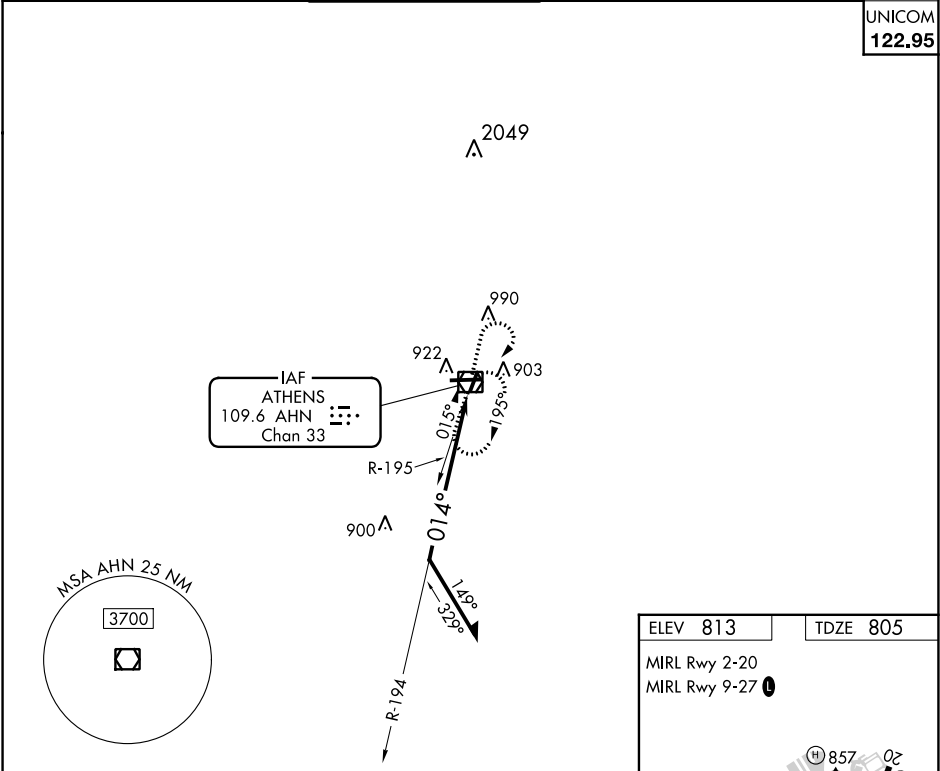
When VGSI inop, Circling Rwy 20 NA at night. When VGSI inop, Straight-in/Circling Rwy 2 procedure NA at night. Visibility reduction by helicopters NA. When local altimeter setting not received, use Winder altimeter setting and increase all MDA 60 feet; increase S-2 Cat D and Circling Cat D visibilities ¼ SM.

MISSED APPROACH: Climb to 2100 then climbing right turn to 2300 direct AHN VOR/DME and hold.

ASOS	ATLANTA APP CON ★	ATHENS TOWER ★	GND CON	CLNC DEL	CLNC DEL
132.875	132.475 291.1 316.05	126.3 (CTAF) 0 338.275	121.8	121.8	132.475 291.1 316.05 (when twr closed)

UNICOM

122.95



Remain within 10 NM

AHN VOR/DME

2100 2300 AHN

194° 014°

2300

CATEGORY	A	B	C	D
S-2	1220-1 415 (500-1)	1220-1¼ 415 (500-1¼)		
CIRCLING	1260-1 447 (500-1)	1280-1 467 (500-1)	1320-1½ 507 (600-1½)	1460-2 647 (700-2)

ELEV 813 TDZE 805

MIRL Rwy 2-20
MIRL Rwy 9-27

0.9% UP 0.7% UP

6122 X 100 3995 X 100

014° to AHN VOR/DME