

|                           |                        |   |
|---------------------------|------------------------|---|
| LOC I-AYS<br><b>108.3</b> | APP CRS<br><b>184°</b> | Rwy Idg <b>5992</b><br>TDZE <b>140</b><br>Apt Elev <b>141</b> |
|---------------------------|------------------------|---|

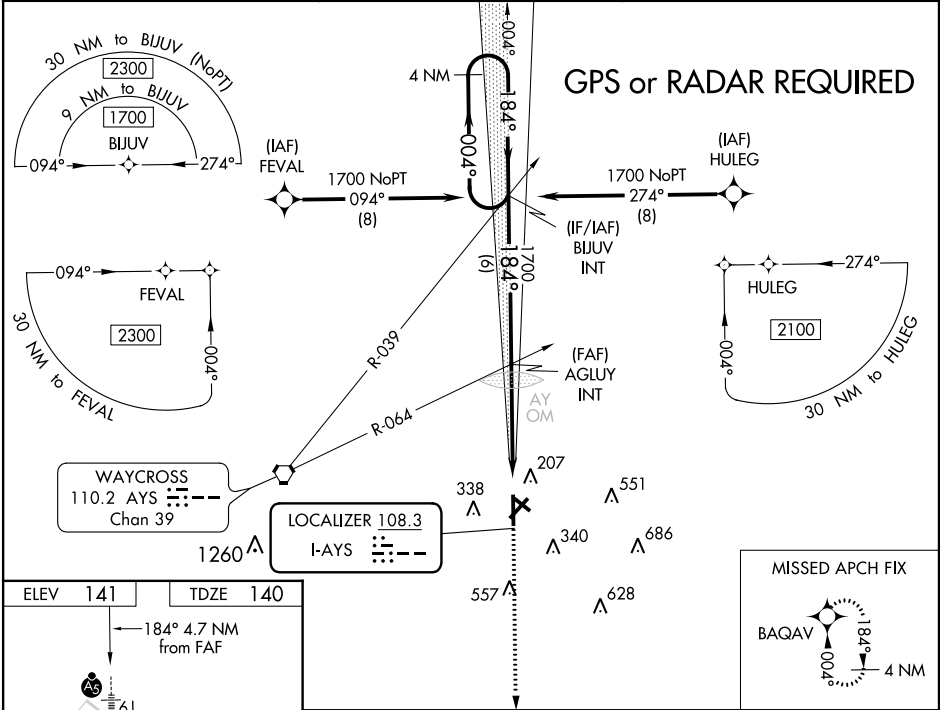
ILS Y or LOC Y RWY 19  
WAYCROSS-WARE COUNTY (AYS)

**GPS required.** When local altimeter setting not received, use Alma altimeter setting: increase DA to 390 feet and all MDA 60 feet; increase S-LOC 19 Cat C/D visibility 1/8 mile; increase Circling Cat C/D visibility 1/4 mile. For inop MALSR when using Alma altimeter setting, increase S-LOC 19 Cat C/D visibility to 1 1/8 mile. Night landing Rwy 5, 31 NA.

**MALSR**

**MISSED APPROACH:**  
Climb to 1800 direct BAQAV and hold.

|                          |   |                                 |
|--------------------------|---|---------------------------------|
| AWOS-3<br><b>118.575</b> | JACKSONVILLE CENTER<br><b>127.575 269.025</b> | UNICOM<br><b>122.8 (CTAF) 0</b> |
|--------------------------|---|---------------------------------|



|  |                 |
|--|-----------------|
| ELEV <b>141</b>  | TDZE <b>140</b> |
|  |                 |
| RW19   |                 |
| VGSIs and ILS glidepath not coincident (VGSi Angle 3.00/TCH 45). |                 |
| 4.7 NM   |                 |
| 6 NM   |                 |
| 4 NM Holding Pattern   |                 |
| 004° → 1700  |                 |
| ← 184°   |                 |
| GS 3.00° TCH 51  |                 |
| CATEGORY   |                 |
| A  |                 |
| B  |                 |
| C  |                 |
| D  |                 |
| S-ILS 19   |                 |
| 340-1/2  |                 |
| 200 (200-1/2)  |                 |
| S-LOC 19   |                 |
| 600-1/2  |                 |
| 460 (500-1/2)  |                 |
| 600-7/8  |                 |
| 460 (500-7/8)  |                 |
| CIRCLING   |                 |
| 660-1  |                 |
| 519 (600-1)  |                 |
| 720-1  |                 |
| 579 (600-1)  |                 |
| 860-2  |                 |
| 719 (800-2)  |                 |
| 860-2 1/4  |                 |
| 719 (800-2 1/4)  |                 |