

WAAS

CH 56209

W01A

APP CRS

004°

Rwy Idg

5992

TDZE

140

Apt Elev

141

RNAV (GPS) RWY 1

WAYCROSS-WARE COUNTY (AYS)

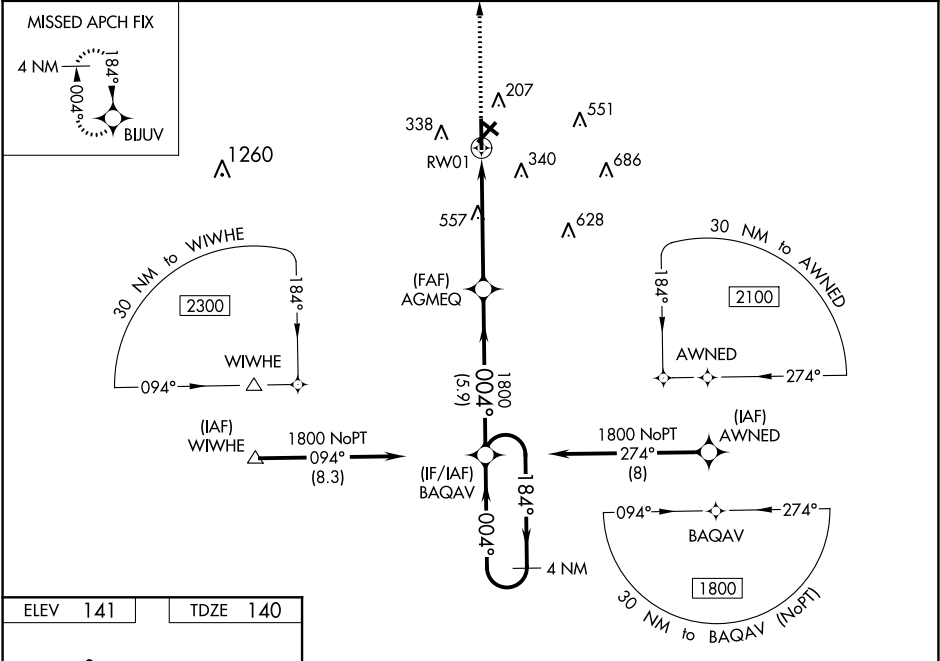
▼

▲

DME/DME RNP-0.3 NA. When local altimeter setting not received, use Alma altimeter setting and increase LPV DA to 473 feet and all visibilities $\frac{1}{8}$ mile, LNAV/VNAV DA to 462 feet and all visibilities $\frac{1}{8}$ mile; increase all MDA 60 feet and visibility Cats C and D $\frac{1}{8}$ mile and Circling Cats C and D visibilities $\frac{1}{4}$ mile. For uncompensated Baro-VNAV systems, LNAV/VNAV NA below -15°C (5°F) or above 54°C (130°F). Night Landing Rwy 5, 31 NA. VDP and Baro-VNAV NA when using Alma altimeter setting. Helicopter visibility reduction below $\frac{3}{4}$ SM NA.

MISSED APPROACH:
Climb to 1700 direct
BIJUV and hold.

AWOS-3 118.575	JACKSONVILLE CENTER 127.575 269.025	UNICOM 122.8 (CTAF) 0
-------------------	--	--------------------------



ELEV 141

TDZE 140

1700 BIJUV

VGSI and RNAV glidepath not coincident
(VGSI Angle 3.00/TCH 33).

4 NM Holding Pattern

*LNAV only.

*2 NM to RWY 1

AGMEQ 1800

BAQAV

1800

GP 3.00° TCH 55

CATEGORY	A	B	C	D
LPV DA	423- $\frac{7}{8}$ 283 (300- $\frac{7}{8}$)			
LNAV/VNAV DA	412- $\frac{7}{8}$ 272 (300- $\frac{7}{8}$)			
LNAV MDA	820-1	680 (700-1)	820-1 $\frac{7}{8}$	680 (700-1 $\frac{7}{8}$)
CIRCLING	820-1	679 (700-1)	860-2 719 (800-2)	860-2 $\frac{1}{4}$ 719 (800-2 $\frac{1}{4}$)