

WAAS CH <b>45509</b> <b>W19A</b>	APP CRS <b>184°</b>	Rwy Idg TDZE <b>140</b> Apt Elev <b>141</b>	<b>5992</b>
--	------------------------	---	-------------

RNAV (GPS) RWY 19

WAYCROSS-WARE COUNTY (AYS)

⚠

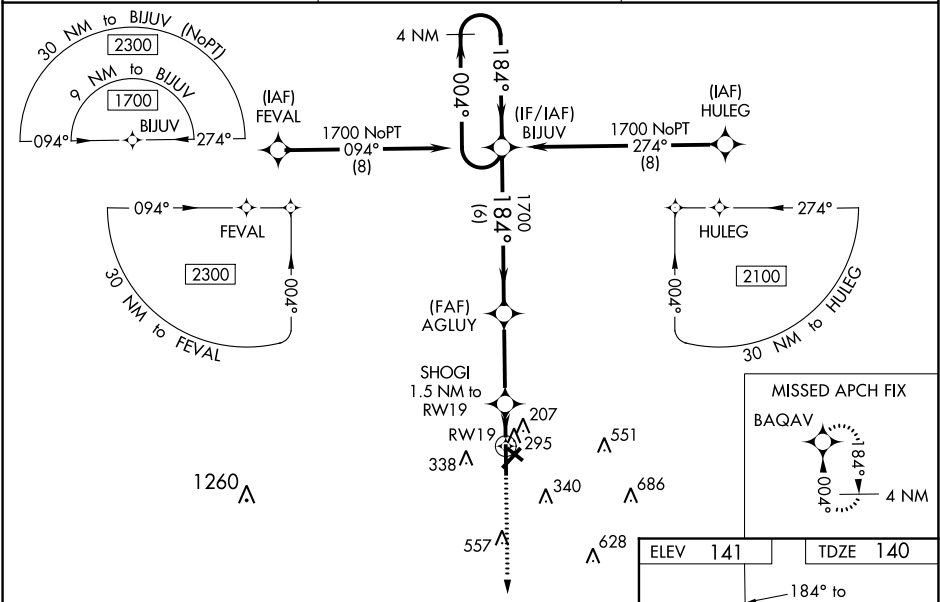
DME/DME RNP-0.3 NA. Baro-VNAV NA when using Alma altimeter setting. When local altimeter setting not received, use Alma altimeter setting: increase LPV DA to 390 feet and LNAV/VNAV DA to 600 feet and all MDA 60 feet; increase LNAV/VNAV visibility all Cats and LNAV Cat C/D visibility ¼ mile; increase Circling Cat C/D visibility ¼ mile. For inop MALSR, increase LNAV Cat C/D visibility to 1½ mile. For inop MALSR when using Alma altimeter setting increase LNAV/VNAV visibility all Cats to 1½ mile, and LNAV Cat C/D visibility to 1¾ mile. For uncompensated Baro-VNAV systems, LNAV/VNAV NA below -15°C (5°F) or above 54°C (130°F). Night landing Rwy 5, 31 NA.

MALSR

MISSED APPROACH:

Climb to 1800 direct BAQAV and hold.

AWOS-3 <b>118.575</b>	JACKSONVILLE CENTER <b>127.575 269.025</b>	UNICOM <b>122.8 (CTAF) 0</b>
--------------------------	---	---------------------------------



4 NM Holding Pattern		VGSI and RNAV glidepath not coincident (VGSI Angle 3.00/TCH 45).		1800	BAQAV
1700 ← 004° / 184° →		AGLUY	1700	SHOGI 1.5 NM to RW19	*LNAV only.
GP 3.00° TCH 51				RW19	*660
		6 NM	3.2 NM	1.5 NM	
CATEGORY	A	B	C	D	
LPV DA		340-½	200 (200-½)		
LNAV/VNAV DA		550-¾	410 (500-¾)		
LNAV MDA	560-½	420 (500-½)	560-¾	420 (500-¾)	
CIRCLING	660-1 519 (600-1)	720-1 579 (600-1)	860-2 719 (800-2)	860-2¼ 719 (800-2¼)	

