

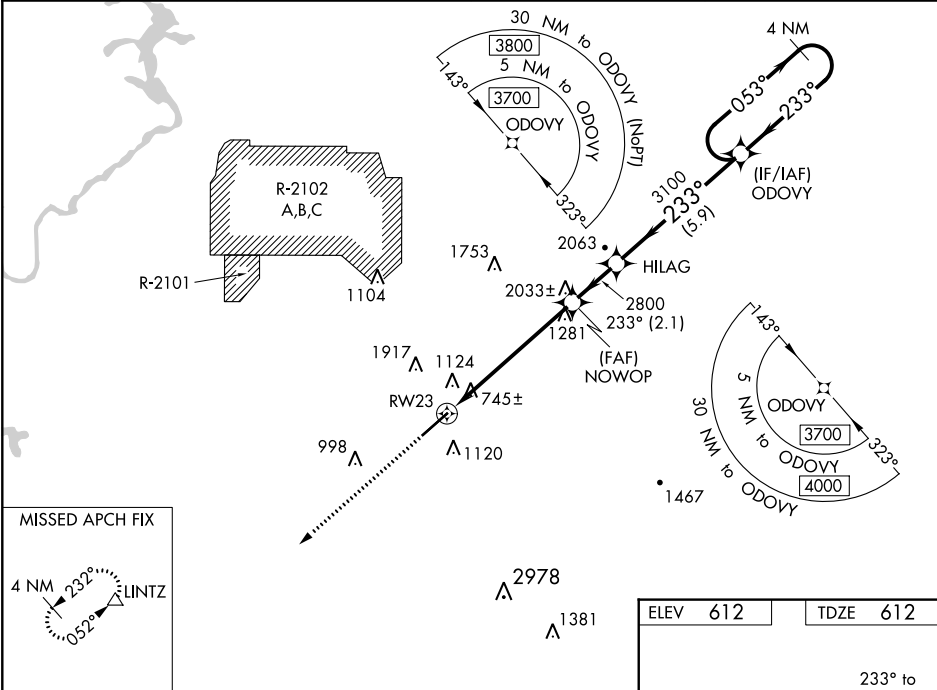
WAAS CH <b>58315</b> <b>W23A</b>	APP CRS <b>233°</b>	Rwy Idg TDZE <b>612</b> Apt Elev <b>612</b>
--	------------------------	---

RNAV (GPS) RWY 23  
ANNISTON RGNL (ANB)

**⚠** For uncompensated Baro-VNAV systems, LNAV/VNAV NA below -8°C (18°F) or above 54°C (130°F). Circling NA north of Rwy 5-23. Rwy 23 helicopter visibility reduction below 3/4 NA. DME/DME RNP-0.3 NA. When local altimeter setting not received, use Gadsden altimeter setting: increase all DA 66 feet and all visibilities 1/2 SM; increase all MDAs 80 feet and Circling Cat A and C visibilities 1/4 SM. Baro-VNAV and VDP NA when using Gadsden altimeter setting.

**MISSED APPROACH:**  
Climb to 3400 direct LINTZ and hold.

ASOS <b>119.675</b>	BIRMINGHAM APP CON <b>132.15 285.45</b>	CTAF <b>123.6</b>	UNICOM <b>123.0</b>
------------------------	--	----------------------	------------------------



3400	LINTZ	VGSI and RNAV glidepath not coincident (VGSI Angle 3.00/TCH 39).	4 NM Holding Pattern
*LNAV only.	*2.3 NM to RW23	NOWOP	HILAG
		2800	3100
		2800	3700
	2.3	3.7 NM	2.1 NM
			5.9 NM
CATEGORY	A	B	C
LPV DA	952-1	340 (400-1)	NA
LNAV/VNAV DA	1274-2	662 (700-2)	NA
LNAV MDA	1380-1 768 (800-1)	1380-1 1/4 768 (800-1 1/4)	1380-2 1/2 768 (800-2 1/2)
CIRCLING	1420-1 808 (900-1)	1420-1 1/4 808 (900-1 1/4)	1420-2 1/2 808 (900-2 1/2)

