

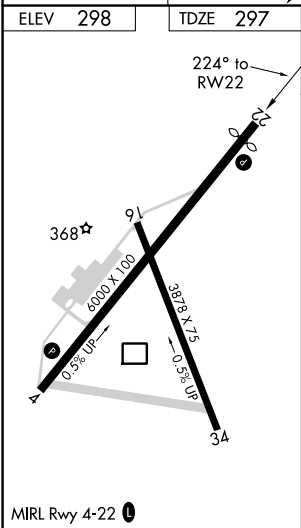
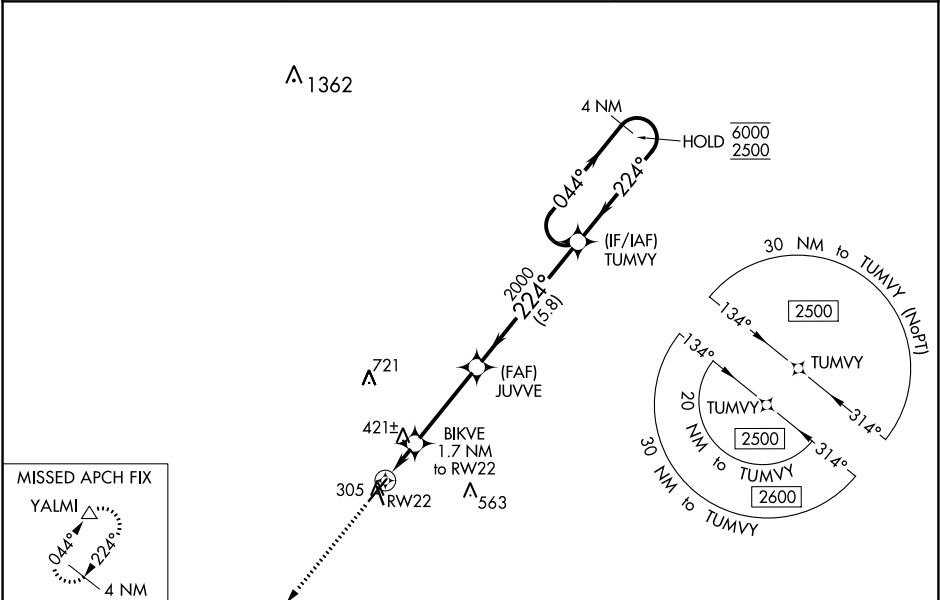
WAAS CH 93803 W22A	APP CRS 224°	Rwy Idg TDZE Apt Elev	5628 297 298
--	------------------------	-----------------------------	---

RNAV (GPS) RWY 22

MOULTRIE MUNI (MGR)

RNP APCH.	MISSED APPROACH: Climb to 2500 direct YALMI and hold.
<div><div>▼</div><div>Circling Rwy 16 NA at night.</div><div>▲</div><div>Rwy 22 helicopter visibility reduction below $\frac{3}{4}$ SM NA. For uncompensated Baro-VNAV systems, LNAV/VNAV NA below -15°C or above 54°C.</div></div>	

AWOS-3PT 118.925	VALDOSTA APP CON ★ 126.6 285.6	UNICOM 122.8 (CTAF) 0
----------------------------	--	--



<div>2500 ↑ YALMI △</div>		<div>4 NM Holding Pattern</div>			
*LNAV only.		<div><div>BIKVE 1.7 NM to RW22</div><div>JUVVE 2000</div><div>TUMVY</div><div>044° → 6000 ← 224° 2500</div><div>GP 3.00° TCH 45</div></div>			
<div>RW22</div>		<div>880*</div>			
1.1 NM		0.6 NM	3.5 NM	5.8 NM	
CATEGORY	A	B	C	D	
LPV DA	601-1		304 (400-1)		
LNAV/VNAV DA	569-1		272 (300-1)		
LNAV MDA	680-1 383 (400-1)		680-1 $\frac{1}{8}$ 383 (400-1 $\frac{1}{8}$)		
CIRCLING	720-1 422 (500-1)	760-1 462 (500-1)	860-1 $\frac{1}{2}$ 562 (600-1 $\frac{1}{2}$)	1080-2 $\frac{1}{2}$ 782 (800-2 $\frac{1}{2}$)	

SE-4, 03 DEC 2020 to 31 DEC 2020

SE-4, 03 DEC 2020 to 31 DEC 2020