

WAAS CH 78029 W18A	APP CRS 185°	Rwy Idg TDZE 777 Apt Elev 777
--	------------------------	---

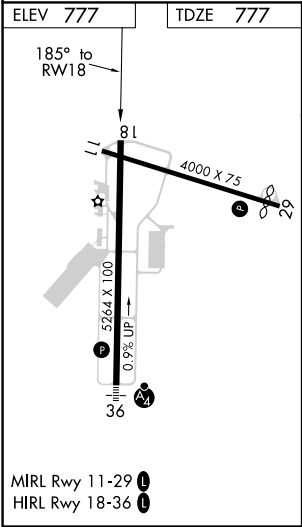
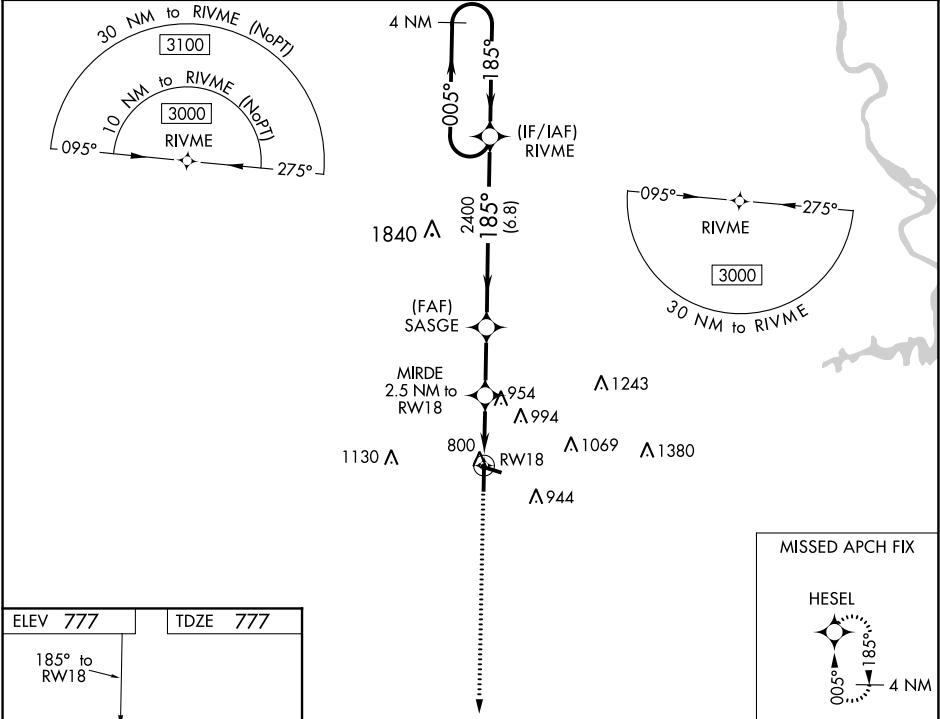
RNAV (GPS) RWY 18

AUBURN UNIVERSITY RGNL (AUO)

▼ For uncompensated Baro-VNAV systems, LNAV/VNAV NA below -16°C (4°F) or above 54°C (130°F).
Baro-VNAV and VDP NA when using Columbus altimeter setting. DME/DME RNP-0.3 NA. Rwy 18
helicopter visibility reduction below ¾ SM not authorized. When local altimeter setting not received, use
Columbus altimeter setting: increase LPV DA to 1140 feet and visibility all Cats ½ SM; increase
LNAV/VNAV DA to 1164 feet and visibility all Cats ¾ SM; increase all MDA 120 feet and LNAV Cats
C/D visibility ¾ SM, Circling Cat C visibility ¼ SM, and circling Cat D visibility ½ SM.

MISSED APPROACH:
Climb to 3000 direct
HESEL and hold.

AWOS-3PT 132.575	ATLANTA APP CON ★ 125.5 323.1	CLNC DEL 118.7	UNICOM 123.0 (CTAF) 0
----------------------------	---	--------------------------	---------------------------------



<div>3000</div> <div>↑</div>		<div>HESEL</div> <div></div>		<div>MIRDE</div> <div>2.5 NM to RW18</div>				<div>SASGE</div> <div>2400</div>		<div>RIVME</div> <div>4 NM Holding Pattern</div>	
*LNAV only		*1.4 NM to RW18		1620*		2400		005°→		3000	
<div></div>		<div></div>		<div></div>		<div></div>		<div></div>		GP 3.00° TCH 50	
CATEGORY		A		B		C		D			
LPV DA				1027-¾		250 (300-¾)					
LNAV/ VNAV DA				1051-¾		274 (300-¾)					
LNAV MDA		1260-1		483 (500-1)		1260-1¾		483 (500-1¾)			
CIRCLING		1280-1 503 (600-1)		1360-1 583 (600-1)		1380-1¾ 603 (700-1¾)		1480-2¼ 703 (800-2¼)			