

WAAS CH <b>78338</b> <b>W02A</b>	APP CRS <b>020°</b>	Rwy Idg TDZE <b>299</b> Apt Elev <b>311</b>
--	------------------------	---

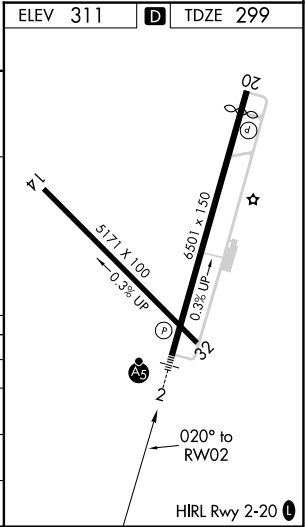
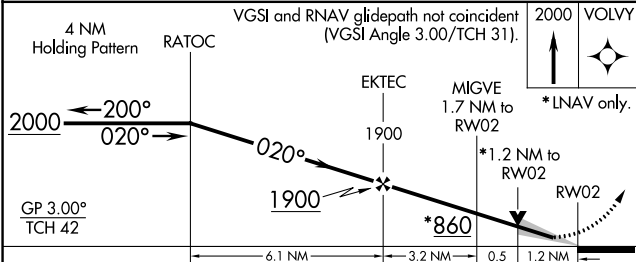
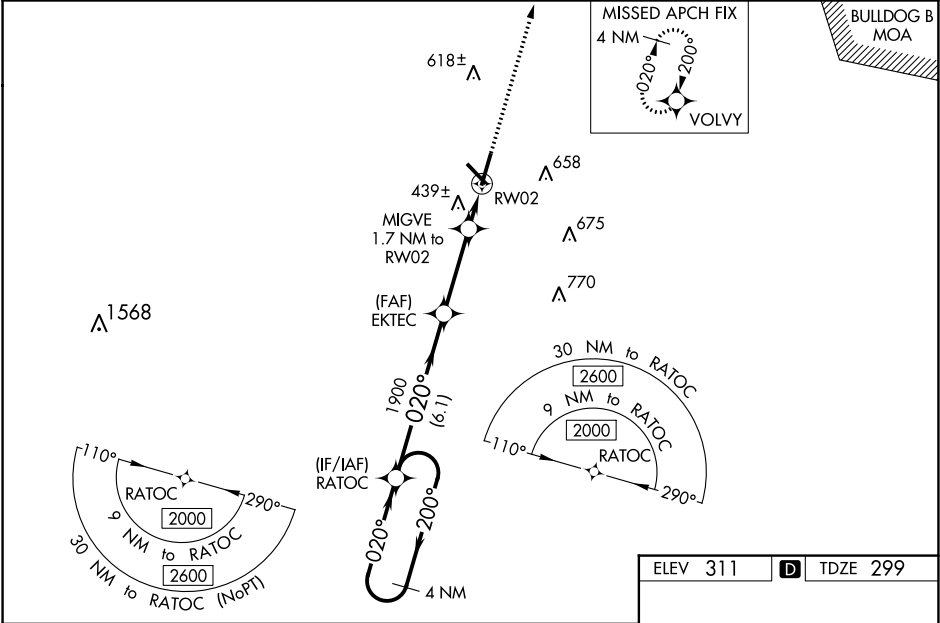
**RNAV (GPS) RWY 2**  
W H 'BUD' BARRON (DBN)

**▼** Night landing: Rwy 32 NA. For uncompensated Baro-VNAV systems, LNAV/VNAV NA below -15°C (5°F) or above 54°C (130°F). Baro-VNAV and VDP NA when using Vidalia altimeter setting. DME/DME RNP-0.3 NA. When local altimeter setting not received, use Vidalia altimeter setting and increase LPV DA to 593 feet and LNAV/VNAV DA to 849 feet and all MDA 100 feet; increase LNAV/VNAV all Cats visibility 3⁄8 mile and LNAV Cats C/D visibility and Circling Cats C/D visibility ¼ mile. For inop MALSR, increase LNAV Cat C/D visibility to 1 1⁄8 mile. For inop MALSR when using Vidalia altimeter setting, increase LPV all Cats visibility to 1 mile, LNAV/VNAV all Cats visibility to 1 1⁄8 mile and LNAV Cat C/D visibility to 1 3⁄8 mile.

MALSR  
A5

MISSED APPROACH:  
Climb to 2000 direct  
VOLVY and hold.

AWOS-3 <b>118.425</b>	ATLANTA APP CON ★ <b>124.2 279.6</b>	UNICOM <b>122.7 (CTAF)</b> <b>0</b>
--------------------------	---	--



CATEGORY	A	B	C	D
LPV DA		499-1⁄2	200 (200-1⁄2)	
LNAV/VNAV DA		755-1 1⁄8	456 (500-1 1⁄8)	
LNAV MDA	700-1⁄2 401 (400-1⁄2)		700-3⁄4 401 (400-3⁄4)	
<b>C</b> CIRCLING	760-1 449 (500-1)	780-1 469 (500-1)	1020-2 709 (800-2)	1020-2 1⁄4 709 (800-2 1⁄4)