

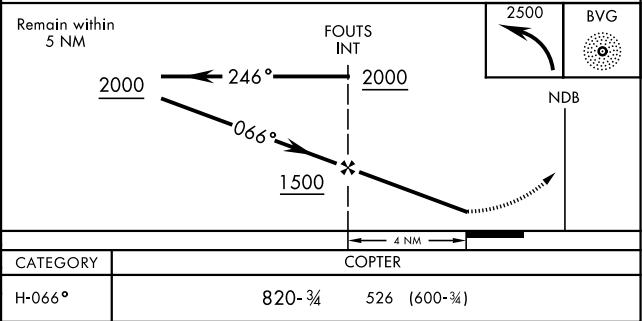
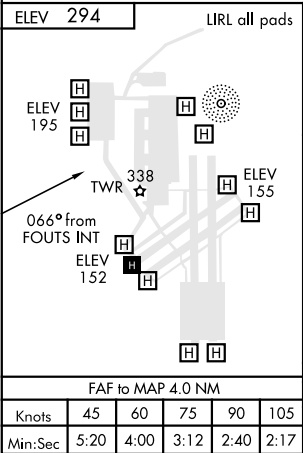
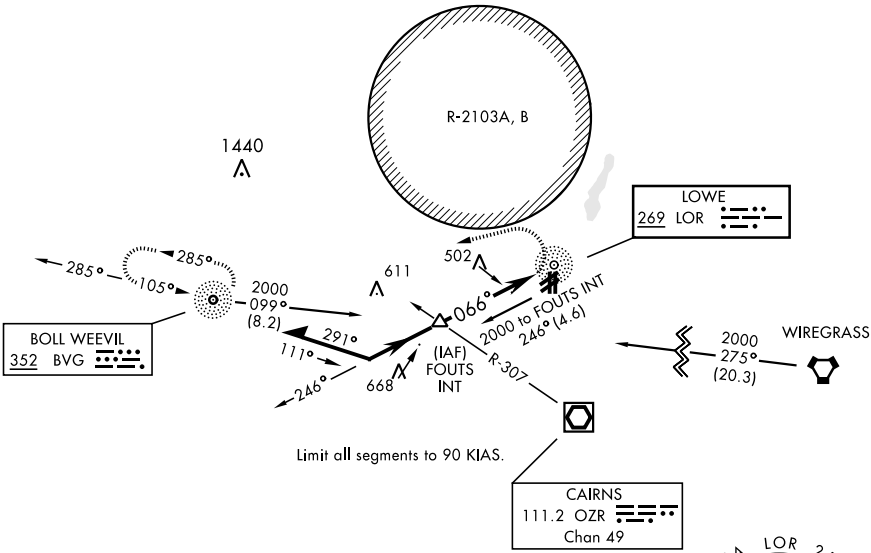
NDB LOR 269	APCH CRS 066°	Rwy Idg TDZE Arp't Elev	N/A N/A 294
-----------------------	-------------------------	-------------------------------	--

AL-5176 [USA]

<div>▼</div>	MISSED APPROACH: Climbing left turn to 2500 direct BVG NDB and hold.		
ATIS 361.1	CAIRNS APP CON 133.45 239.275	LOWE TOWER ★ 141.3 289.15	GND CON 357.15

When local altimeter setting not received,
use Cairns AAF altimeter setting.

NOT FOR CIVIL USE



SE-4, 03 DEC 2020 to 31 DEC 2020

SE-4, 03 DEC 2020 to 31 DEC 2020