

VOR EDN 116.6	APCH CRS 069°	Rwy Idg TDZE Arpt Elev	N/A N/A 294
-------------------------	-------------------------	------------------------------	--

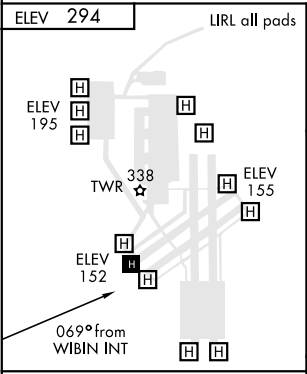
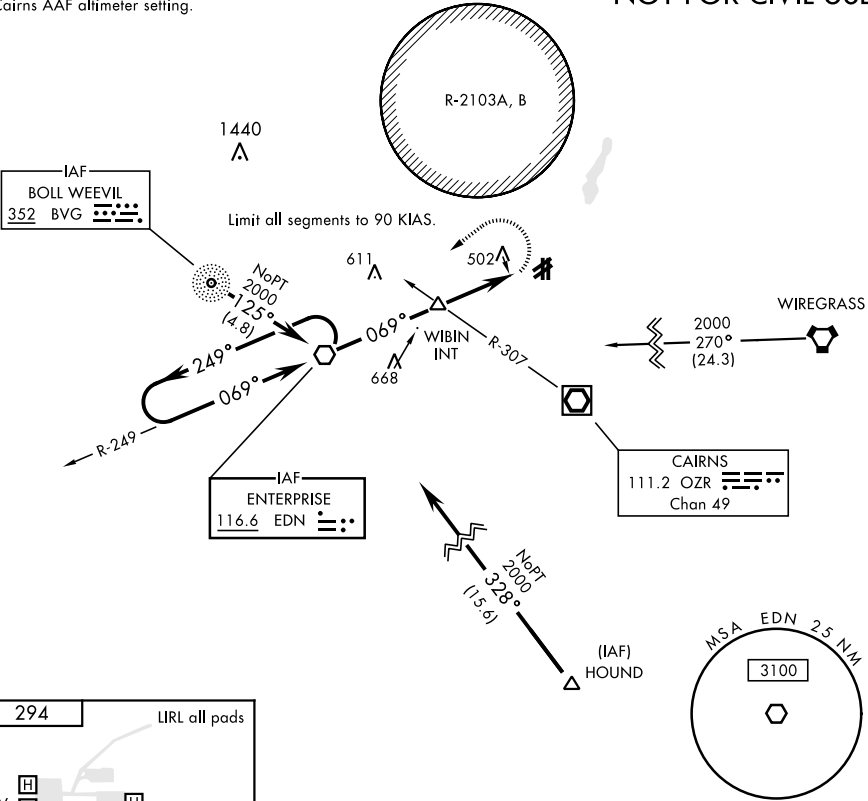
AL-5176 [USA]

 NA	MISSED APPROACH: Climbing left turn to 2000 direct to EDN VOR and hold.
---------------	---

ATIS 361.1	CAIRNS APP CON 133.45 239.275	LOWE TOWER ★ 141.3 289.15	GND CON 357.15
----------------------	---	-------------------------------------	--------------------------

When local altimeter setting not received,
use Cairns AAF altimeter setting.

NOT FOR CIVIL USE



FAF to MAP 4.0 NM					CATEGORY	COPTER	
Knots	45	60	75	90	105	H-069°	760-¾ 466 (500-¾)
Min:Sec	5:20	4:00	3:12	2:40	2:17		

SE-4, 03 DEC 2020 to 31 DEC 2020

SE-4, 03 DEC 2020 to 31 DEC 2020