

FORT RUCKER, ALABAMA

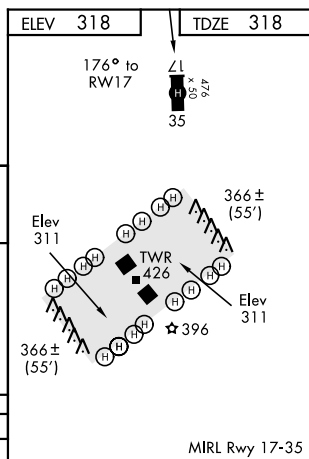
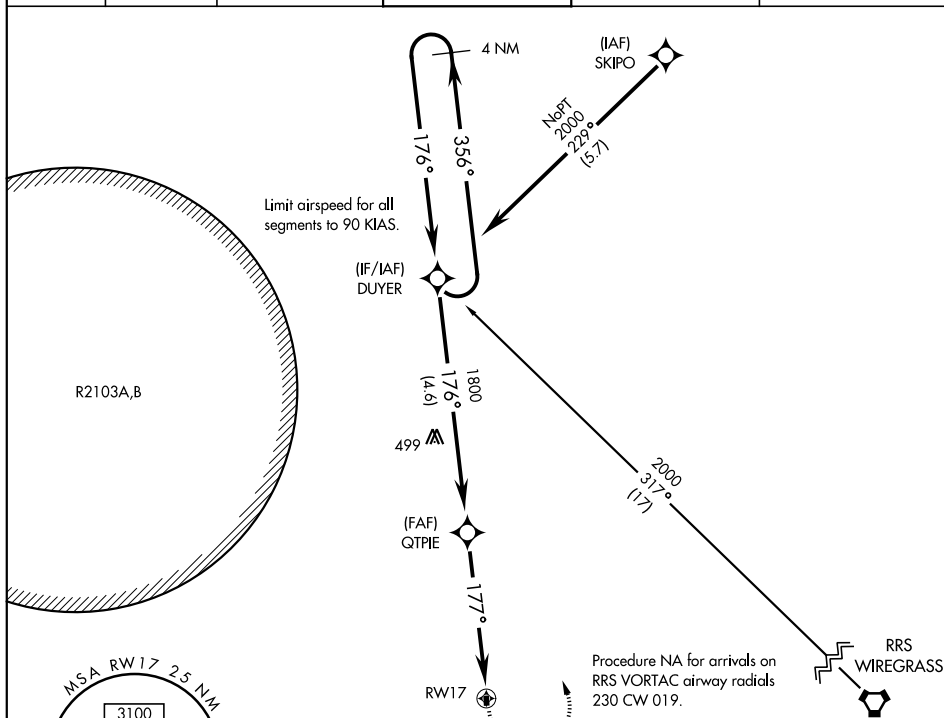
COPTER RNAV (GPS) RWY 17

APCH CRS	Rwy Idg	476
176°	TDZE	318
	Arpt Elev	318

AL-5183 [USA]

HANCHEY AHP (STRIP) (KHEY)

<div><div><div></div></div><div>NA</div></div>	DME/DME RNP-0.3 NA.				MISSED APPROACH: Climbing left turn to 2000 direct DUYER and hold.				
	Use CAIRNS altimeter setting, when not received, use LOWE altimeter setting.								
ATIS ★	LOWE ASOS	CAIRNS APP CON		HANCHEY TOWER ★		GND CON		CAIRNS CLNC DEL	
141.375	118.225	125.4	327.125	140.5	387.85	142.55	225.575	118.075	380.1



4 NM holding pattern. DUYER		2000	DUYER
		1800	RWY 17
		4.6 NM	3 NM
CATEGORY	COPTER		
LNAV MDA	900-½ 582 (600-½)		

FORT RUCKER, ALABAMA

31° 21' N-85° 39' W

HANCHEY AHP (STRIP) (KHEY)

Amdt 2 19JUL18

COPTER RNAV (GPS) RWY 17

SE-4, 03 DEC 2020 to 31 DEC 2020