

WAAS  
CH **61005**  
**W21A**

APP CRS  
**207°**

Rwy ldg  
TDZE **980**  
Apt Elev **996**

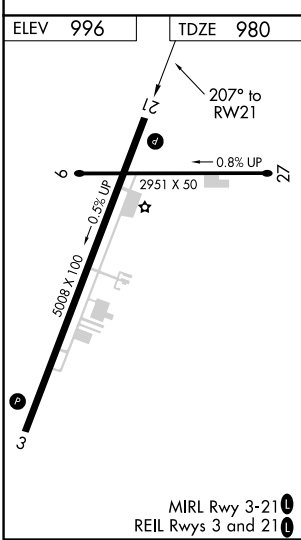
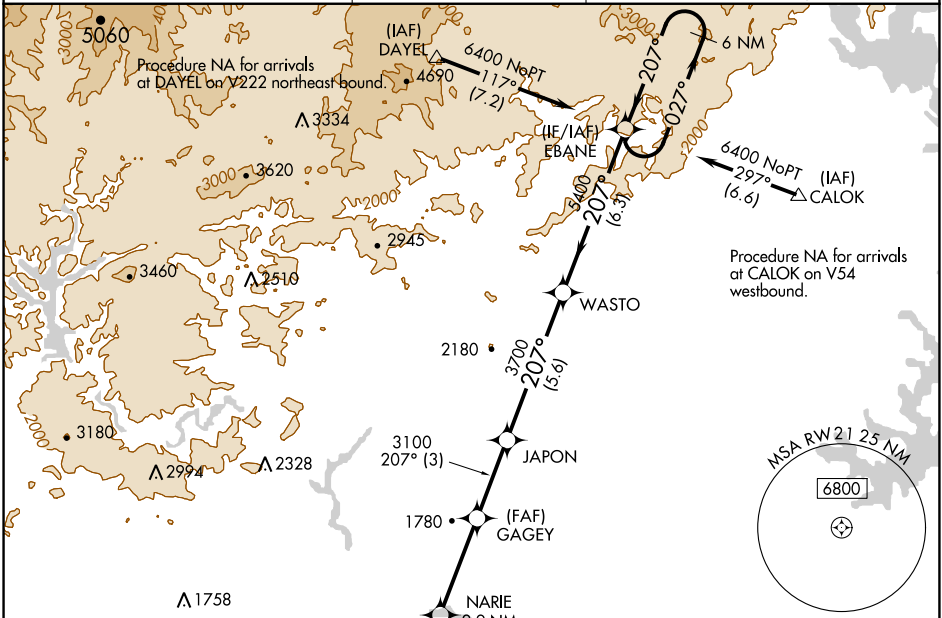
RNAV (GPS) RWY 21

TOCCOA RG LETOURNEAU FIELD (TOC)

Baro-VNAV and VDP NA when using Gainesville altimeter setting. For uncompensated Baro-VNAV NA systems, LNAV/VNAV NA below -8°C (18°F) or above 54°C (130°F). DME/DME RNP-0.3 NA. When local altimeter setting not received use Gainesville altimeter setting and increase LPV DA to 1345 ft, LNAV/VNAV DA to 1510 ft, and all MDA 120 ft, increase LPV and LNAV all Cats visibility ¼ mile, LNAV/VNAV all Cats visibility ⅓ mile. Increase Circling Cats A/B/C visibility ¼ mile.

MISSED APPROACH: Climb to 5800 direct ZIGIP and on track 295° to TALLE and hold, continue climb-in-hold to 5800.

AWOS-3 <b>119.625</b>	ATLANTA CENTER <b>134.8 379.95</b>	UNICOM <b>122.8 (CTAF) 0</b>
--------------------------	---------------------------------------	---------------------------------



ELEV 996 TDZE 980		RWY 21		MISSED APCH FIX	
5800		ZIGIP		TALLE	
3700		JAPON		WASTO	
3100		GAGEY		EBANE	
2950		NARIE		6400	
207°		207°		027°	
1920		3100		GP 3.00°	
1.8 NM		3.7 NM		6.3 NM	
CATEGORY		A		B	
LPV DA		1230-1		250 (300-1)	
LNAV/VNAV DA		1395-1½		415 (400-1½)	
LNAV MDA		1560-1 580 (600-1)		1560-1½ 580 (600-1½)	
CIRCLING		1720-1 724 (800-1)		1760-2¼ 764 (800-2¼)	
				2480-3 1484 (1500-3)	