

LOC RWY 10
CRISP COUNTY-CORDELE (CKF)

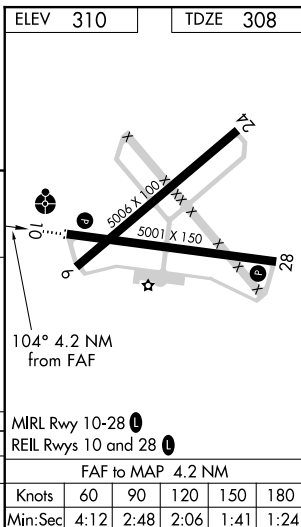
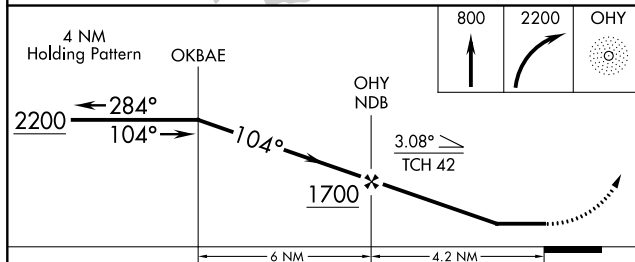
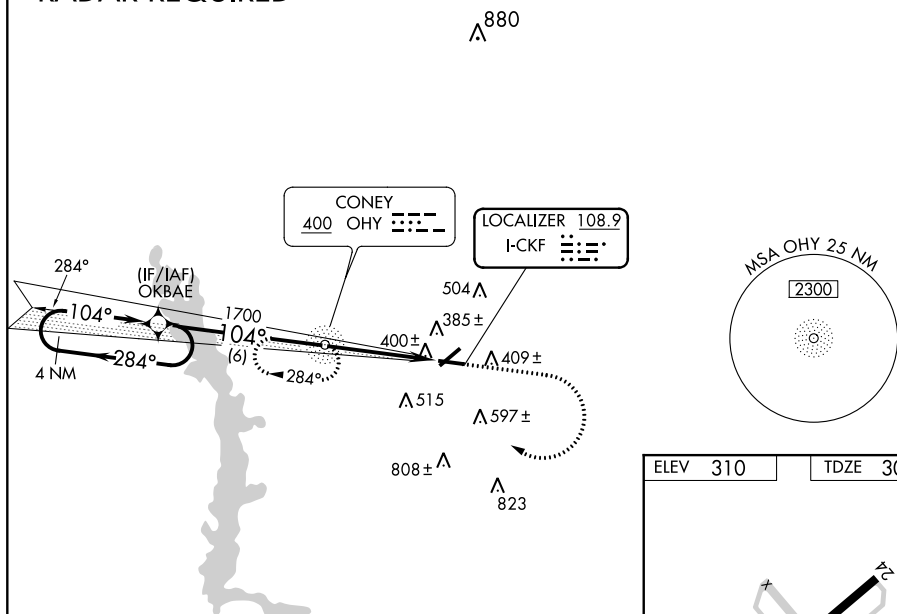
▼ Rwy 10 helicopter visibility reduction below 1 SM NA.
▲ NA ADF required. Circling Rwy 28 NA at night. When local altimeter setting not received, use Albany altimeter setting and increase all MDA 100 feet and increase S-10 Cat C/D visibility $\frac{1}{8}$ SM and Circling Cat C/D visibility $\frac{1}{4}$ SM. Inop table does not apply to S-10. Inop table does not apply to S-10 Cat A/B when using Albany altimeter setting. For inop ALS, when using Albany altimeter setting increase S-10 Cat C/D visibility to $\frac{1}{3}$ SM.

ODALS



MISSED APPROACH: Climb to 800 then climbing right turn to 2200 direct OHY NDB and hold, continue climb-in-hold to 2200.

UNICOM
123.050 (CTAF) **L**

RNAV 1-GPS or
RADAR REQUIRED

SE-4, 03 DEC 2020 to 31 DEC 2020