

WAAS CH 57905 W10A	APP CRS 103°	Rwy Idg 5001 TDZE 308 Apt Elev 310
--	------------------------	---

RNAV (GPS) RWY 10

CRISP COUNTY-CORDELE (CKF)

RNP APCH.

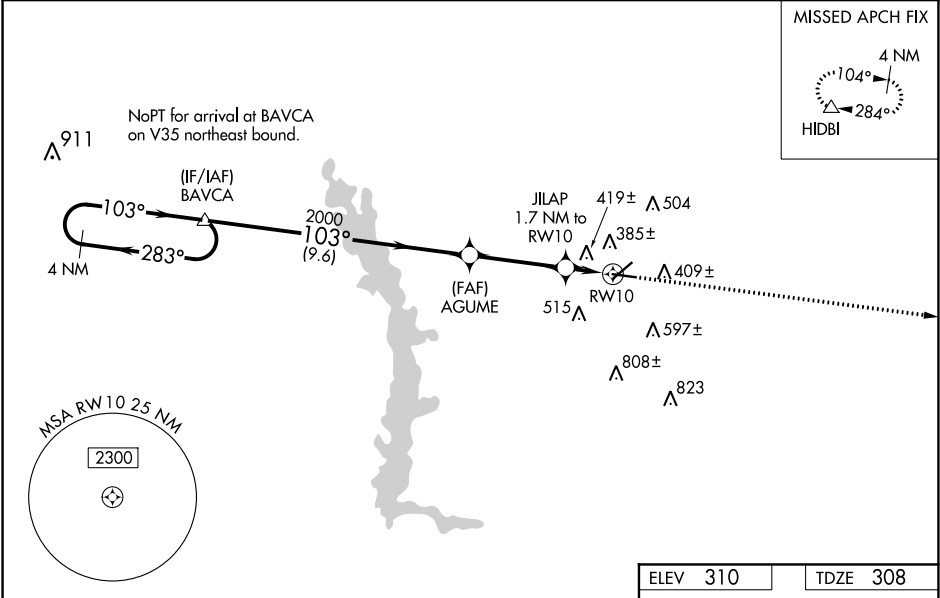
▼

For uncompensated Baro-VNAV systems, LNAV/VNAV NA below -15°C or above 54°C. Rwy 10 helicopter visibility reduction below ¾ SM NA. Circling Rwy 28 NA at night. Inop table does not apply to LPV and LNAV all Cats. For inop ALS, increase LNAV/VNAV Cat A/B visibility to 1½ SM.

ODALS

MISSED APPROACH: Climb to 2100 direct HIDBI and hold.

AWOS-3PT 119.325	JACKSONVILLE CENTER 125.75 226.8	UNICOM 123.050 (CTAF)
----------------------------	--	---------------------------------



ELEV 310

TDZE 308

VGSI and RNAV glidepath not coincident (VGSI Angle 3.00/TCH 42).

4 NM Holding Pattern

BAVCA

AGUME

JILAP

1.7 NM to RW10

*LNAV only.

2100

HIDBI

2000

283°

103°

GP 3.00° TCH 53

2000

*880

*1.1 NM to RW10

RW10

9.6 NM

3.5 NM

0.6

1.1 NM

CATEGORY	A	B	C	D
LPV DA	612-1 304 (400-1)			
LNAV/ VNAV DA	726-1¼ 418 (300-1¼)			
LNAV MDA	680-1 372 (400-1)			
CIRCLING	800-1 490 (500-1)	820-1 510 (600-1)	1080-2¼ 770 (800-2¼)	1160-2¾ 850 (900-2¾)

MIRL Rwy 10-28

REIL Rwy 10 and 28

103° to RW10