

NDB BMW	APP CRS	Rwy Idg	4600
404	312°	TDZE	922
		Apt Elev	934

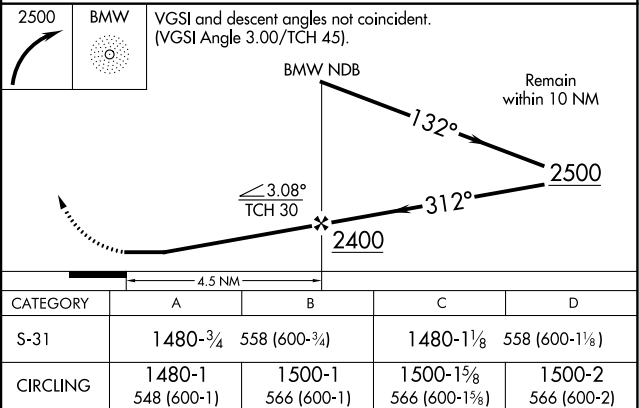
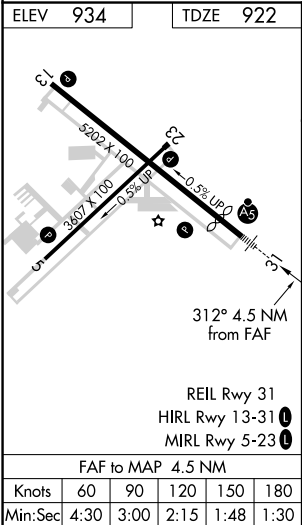
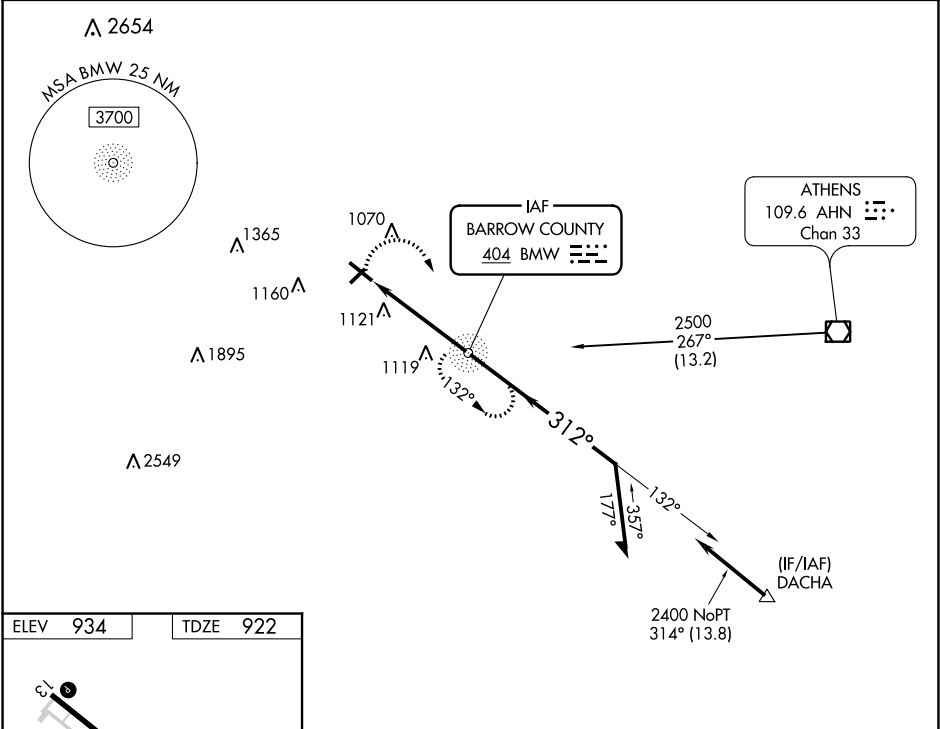
NDB RWY 31  
BARROW COUNTY (WDR)

▼ For inop ALS, increase S-31 Cat A/B visibility to 1 SM. Circling Rwy 13, 23 NA at night. Rwy 31 helicopter visibility reduction below ¾ SM NA.

MALSR

MISSED APPROACH: Climbing right turn to 2500 direct BMW NDB and hold.

AWOS-3 118.575	ATLANTA APP CON ★ 132.475 291.1	UNICOM 123.0 (CTAF) 0
-------------------	------------------------------------	--------------------------



SE-4, 03 DEC 2020 to 31 DEC 2020

SE-4, 03 DEC 2020 to 31 DEC 2020