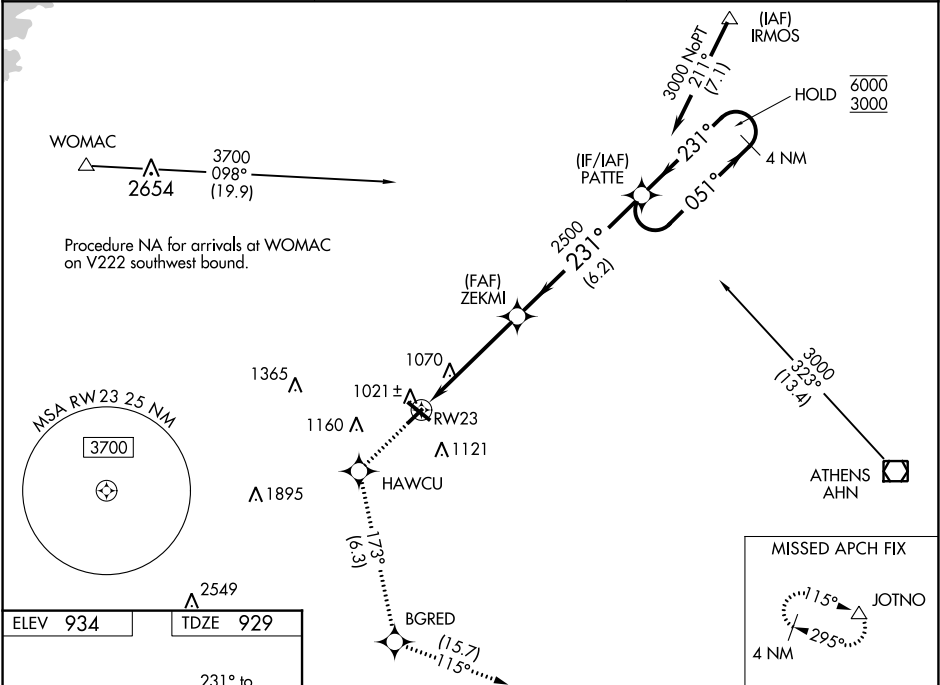


WAAS CH 82516 W23A	APP CRS 231°	Rwy Idg TDZE Apt Elev	3607 929 934
--	------------------------	-----------------------------	---

RNAV (GPS) RWY 23
BARROW COUNTY (WDR)

RNP APCH.	MISSED APPROACH: Climb to 3000 direct HAWCU and on track 173° to BGRED and on track 115° to JOTNO and hold.
-----------	---

AWOS-3 118.575	ATLANTA APP CON ★ 132.475 291.1	UNICOM 123.0 (CTAF) 0
--------------------------	---	---------------------------------



CATEGORY	A	B	C	D
LPV DA	1179-1		250 (300-1)	
LNNAV/VNAV DA	1274-1		345 (400-1)	
LNNAV MDA	1320-1	391 (400-1)	1320-1½	391 (400-1½)
CIRCLING	1400-1 466 (500-1)	1500-1 566 (600-1)	1500-1½ 566 (600-1½)	1500-2 566 (600-2)

SE-4, 03 DEC 2020 to 31 DEC 2020

SE-4, 03 DEC 2020 to 31 DEC 2020