

WAAS CH 69305 W31A	APP CRS 314°	Rwy Idg TDZE 922 Apt Elev 934
--	------------------------	---

RNAV (GPS) RWY 31

BARROW COUNTY (WDR)

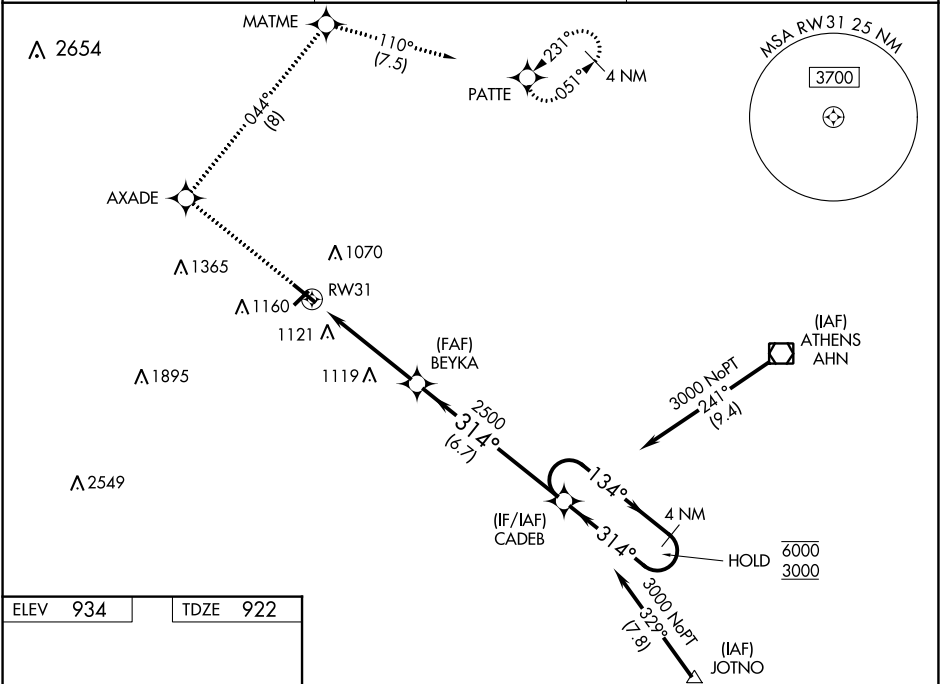
RNP APCH.

▼ For uncompensated Baro-VNAV systems, LNAV/VNAV NA below -16°C or above 54°C. Circling Rwy 13, 23 NA at night. Rwy 31 helicopter visibility reduction below ¾ SM NA. For inop ALS, increase LNAV/VNAV all Cats visibility to 1 SM, LNAV Cat A/B visibility to 1 SM, Cat C/D to 1½ SM. Inop table does not apply to LPV all Cats.

MALSR

MISSED APPROACH: Climb to 3000 direct AXADE and right turn on track 044° to MATME and on track 110° to PATTE and hold.

AWOS-3 118.575	ATLANTA APP CON ★ 132.475 291.1	UNICOM 123.0 (CTAF) 0
--------------------------	---	---------------------------------



3000

↑

AXADE

✧

tr 044°

↷

MATME

✧

tr 110°

↷

PATTE

✧

CADEB

4 NM Holding Pattern

VGSI and RNAV glidepath not coincident.
(VGSI Angle 3.00°/TCH 45).

* LNAV only.

BEYKA

2500

314°

134°

6000

3000

GP 3.00° TCH 41

RW31

1.5 NM to RW31

1.5 NM

3.3 NM

6.7 NM

CATEGORY	A	B	C	D
LPV DA	1172-¾ 250 (300-¾)			
LNAV/VNAV DA	1274-¾ 352 (400-¾)			
LNAV MDA	1420-¾ 498 (500-¾)		1420-1 498 (500-1)	
CIRCLING	1420-1 486 (500-1)	1500-1 566 (600-1)	1500-1½ 566 (600-1½)	1500-2 566 (600-2)

REIL Rwy 31

HIRL Rwy 13-31

MIRL Rwy 5-23