

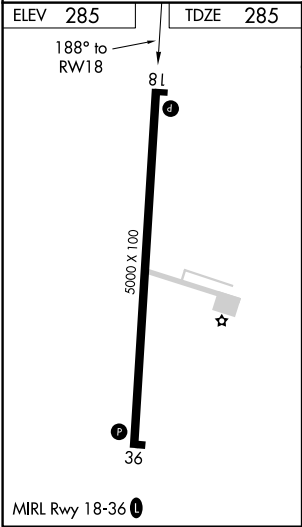
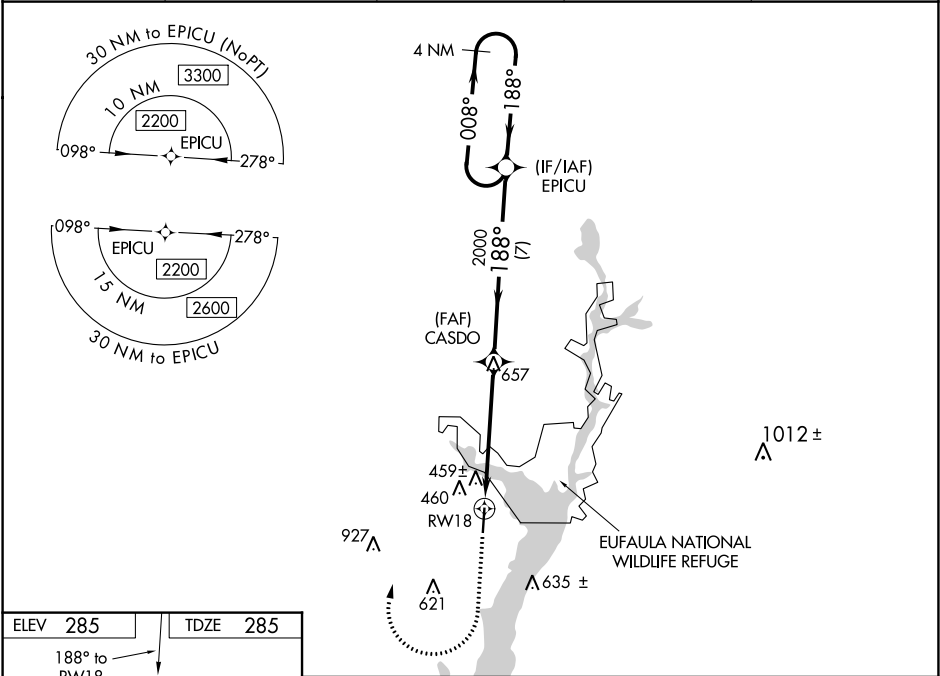
WAAS CH 86723 W18A	APP CRS 188°	Rwy Idg TDZE Apt Elev	5000 285 285
--	------------------------	-----------------------------	---

RNAV (GPS) RWY 18

WEEDON FIELD (EUF')

<div><div>▼</div><div>▲NA</div></div> <p>DME/DME RNP-0.3 NA. Baro-VNAV NA. Use Clayton altimeter setting; when not received, use Columbus, GA altimeter setting and increase all DA 33 feet and all MDA 40 feet; increase LPV all Cats and LNAV Cats C and D and Circling Cat C visibility ⅛ mile and Circling D visibility ¼ mile.</p>	<p>MISSED APPROACH: Climb to 1300 then climbing right turn to 2200 direct EPICU and hold.</p>
---	---

ASOS 128.325	11A AWOS-3 118.775	ATLANTA APP CON ★ 125.5 323.1	CLNC DEL 134.25 339.8	UNICOM 122.8 (CTAF) 📶
------------------------	------------------------------	---	---------------------------------	--



1300	2200	EPICU	VGSI and RNAV glidepath not coincident (VGSI Angle 3.00/TCH 26).	4 NM Holding Pattern
↑	↻	✧		
GP 3.00° TCH 40				
CATEGORY	A	B	C	D
LPV DA	599-1 314 (400-1)			
LNAV/VNAV DA	706-1½ 421 (500-1½)			
LNAV MDA	940-1 655 (700-1)		940-1⅞ 655 (700-1⅞)	
CIRCLING	940-1 655 (700-1)		940-1⅞ 655 (700-1⅞)	1000-2¼ 715 (800-2¼)