

NDB AZE  
414

APP CRS  
155°

Rwy Idg	<b>5012</b>
TDZE	<b>255</b>
Apt Elev	<b>255</b>

NDB RWY 14  
HAZLEHURST (AZE)

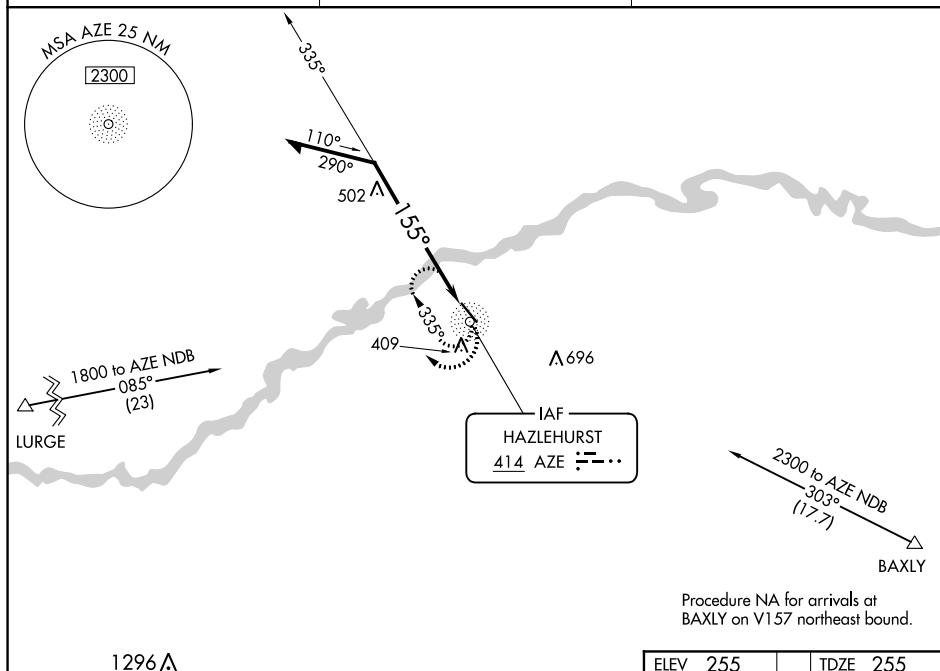


Rwy 14 helicopter visibility reduction below  $\frac{3}{4}$  SM NA.

**MISSED APPROACH:** Climbing right turn to 1800 in AZE NDB holding pattern.

AWOS-3  
119.125

JACKSONVILLE CENTER  
127.575 269.025

UNICOM  
122.8 (CTAF) **L**

Procedure NA for arrivals at  
BAXLY on V157 northeast bound.

1296  $\Delta$ 

ELEV 255

TDZE 255

Remain  
within 10 NM

AZE  
NDB

---

1800

AZE

1800


1

---

1800

AZE

REIL Rwy 14 and 32 **L**MIRL Rwy 14-32 **L**

CATEGORY	A	B	C	D
S-14	920-1	665 (700-1)	920-1 $\frac{7}{8}$	665 (700-1 $\frac{7}{8}$ )
 CIRCLING	920-1	665 (700-1)	920-1 $\frac{7}{8}$ 665 (700-1 $\frac{7}{8}$ )	1060-2 $\frac{1}{2}$ 805 (900-2 $\frac{1}{2}$ )

HAZLEHURST, GEORGIA

Amdt 5A 27FEB20

31°53'N-82°39'W

HAZLEHURST (AZE)  
NDB RWY 14

NDB RWY 14