

WAAS  
CH **82104**  
**W02A**

APP CRS  
**019°**

Rwy Idg **6506**  
TDZE **300**  
Apt Elev **303**

RNAV (GPS) RWY 2  
HEART OF GEORGIA RGNL (E2M)

▼

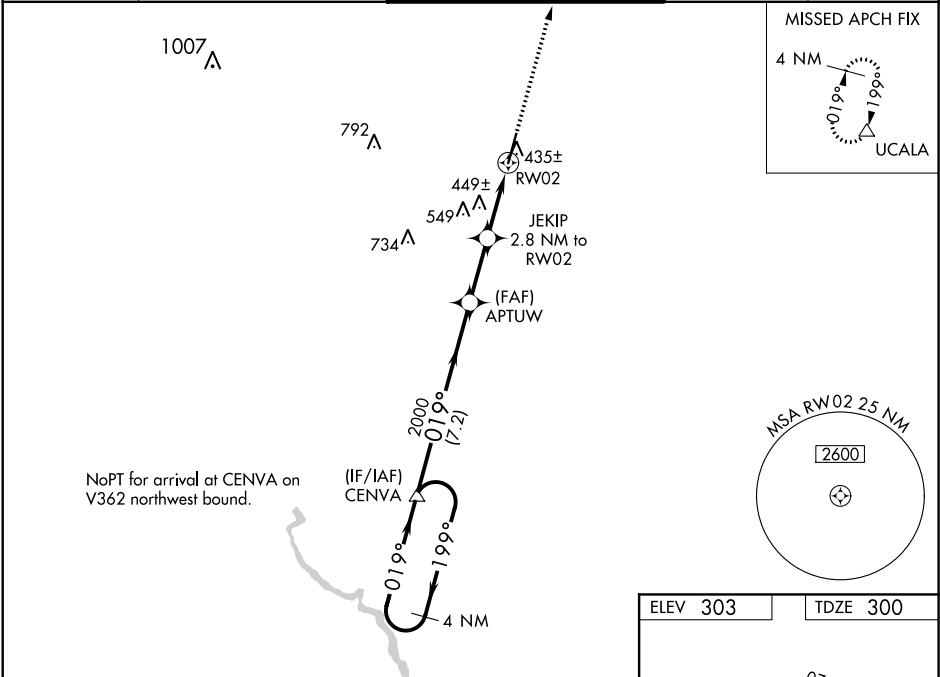
▲

Baro-VNAV NA when using Dublin altimeter setting. For uncompensated Baro-VNAV systems, LNAV/VNAV NA below -15°C (5°F) or above 54°C (130°F). When local altimeter setting not received, use Dublin altimeter setting and increase all DA 52 feet and all MDA 60 feet; increase LNAV/VNAV all Cats, LNAV Cat C/D and Circling Cat C visibility ¼ miles. DME/DME RNP-0.3 NA. VDP NA with Dublin altimeter setting.

MALSR

MISSED APPROACH:  
Climb to 2100 direct UCALA and hold.

ATIS <b>119.425</b>	JACKSONVILLE CENTER <b>127.575 269.025</b>	HEART OF GEORGIA TOWER ★ <b>124.55 (CTAF) 0</b>	GND CON <b>121.175</b>	UNICOM <b>122.95</b>
------------------------	---	--	---------------------------	-------------------------



VGSI and RNAV glidepath not coincident (VGSI Angle 3.00/TCH 45).		2100	UCALA
4 NM Holding Pattern		APTUW 2000	JEKIP 2.8 NM to RW02
GP 3.00° TCH 49		2000	*1.1 NM to RW02
7.2 NM		2.4 NM	1.7 NM
1.1 NM		1.1 NM	
CATEGORY	A	B	C
LPV DA		500-½	200 (200-½)
LNAV/VNAV DA		595-½	295 (300-½)
LNAV MDA	700-½	400 (400-½)	700-¾
CIRCLING	760-1 457 (500-1)	820-1 517 (600-1)	900-1½ 597 (600-1½)
			900-2 597 (600-2)