

WAAS CH 90534 W18A	APP CRS 182°	Rwy Idg 4799 TDZE 675 Apt Elev 686
--	------------------------	---

RNAV (GPS) RWY 18

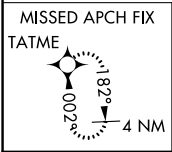
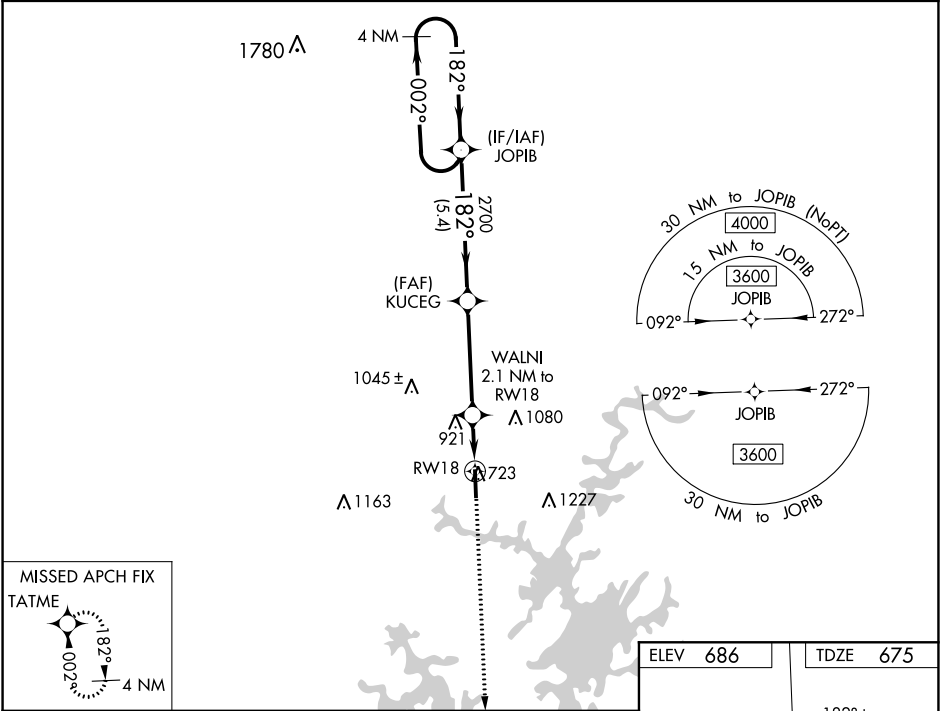
THOMAS C RUSSELL FIELD (ALX)

⚠

For uncompensated Baro-VNAV systems, LNAV/VNAV NA below -1.6°C (4°F) or above 54°C (130°F). Rwy 18 helicopter visibility reduction below 1 SM NA. DME/DME RNP-0.3 NA.

MISSED APPROACH: Climb to 3000 direct TATME and hold.

AWOS-3PT 118.325	MONTGOMERY APP CON ★ 121.2 269.05	UNICOM 122.7 (CTAF) 0
----------------------------	---	---------------------------------



4 NM Holding Pattern

JOPIB

3600 ← 002°
182° →

GP 3.00°
TCH 57

KUCEG 2700

WALNI 2.1 NM to RW18

*LNAV only.

2700

*1400

5.4 NM

4.1 NM

2.1 NM

3000

TATME

CATEGORY	A	B	C	D
LPV DA		1061-1¼	386 (400-1¼)	
LNAV/ VNAV DA		1214-1¾	539 (600-1¾)	
LNAV MDA	1160-1	485 (500-1)	1160-1¾	485 (500-1¾)
CIRCLING	1180-1 494 (500-1)	1240-1 554 (600-1)	1540-2½ 854 (900-2½)	1540-2¾ 854 (900-2¾)

ELEV 686

TDZE 675

182° to RW18

81

5422 X 96

1.4% UP

36

REIL Rwy 36

MIRL Rwy 18-36 0