

WAAS CH 61231 W36A	APP CRS 002°	Rwy Idg TDZE 648 Apt Elev 686	5422 648 686
--	------------------------	---	---

RNAV (GPS) RWY 36

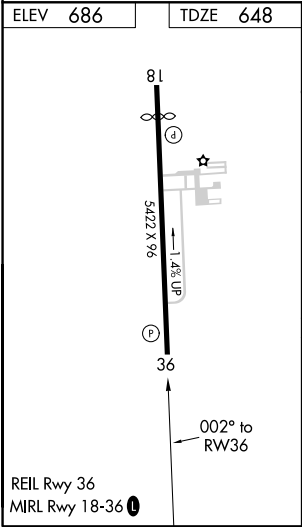
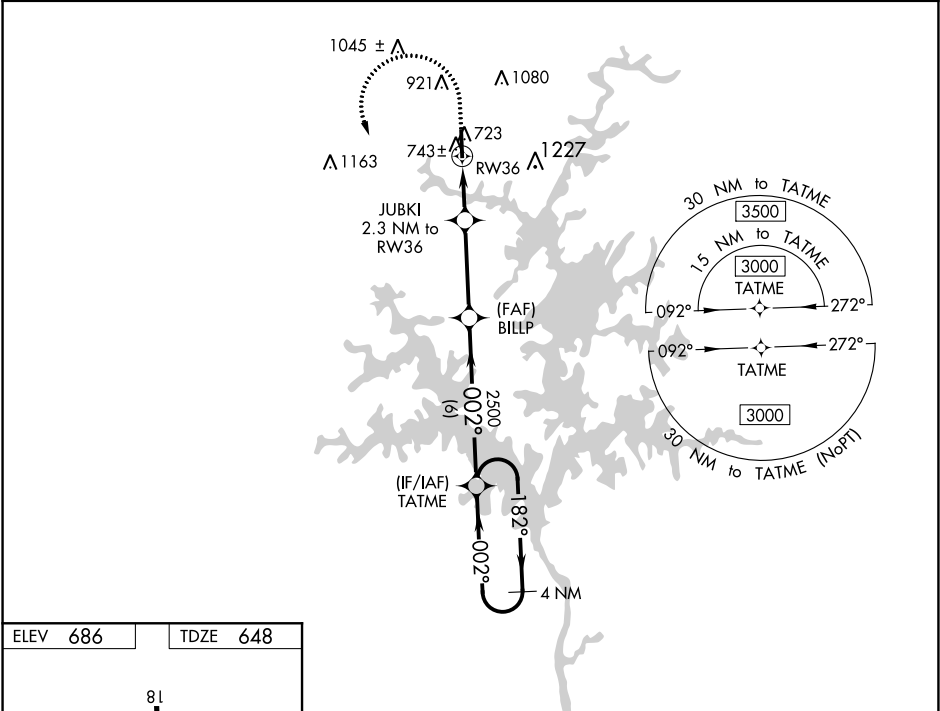
THOMAS C RUSSELL FIELD (ALX)

⚠

For uncompensated Baro-VNAV systems, LNAV/VNAV NA below -16°C (4°F) or above 54°C (130°F). DME/DME RNP-0.3 NA.

MISSED APPROACH: Climb to 1100 then climbing left turn to 3000 direct TATME and hold.

AWOS-3PT 118.325	MONTGOMERY APP CON ★ 121.2 269.05	UNICOM 122.7 (CTAF) ①
----------------------------	---	---------------------------------



1100	3000	TATME	VGSI and RNAV glidepath not coincident.			
*LNAV only.		JUBKI 2.3 NM to RW36	BILLP 2500	TATME	4 NM Holding Pattern	
*1.1 NM to RW36		*1380	2500	182°	002°	3000
1.1		1.2	3.5 NM	6 NM	GP 3.00° TCH 50	
CATEGORY	A	B	C	D		
LPV DA	898-1		250 (300-1)			
LNAV/LNAV DA	940-1½		292 (300-1½)			
LNAV MDA	1000-1		352 (400-1)			
CIRCLING	1180-1	1240-1	1540-2½	1540-2¾		
	494 (500-1)	554 (600-1)	854 (900-2½)	854 (900-2¾)		