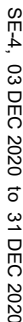
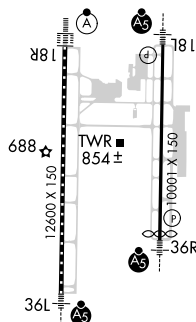


ILS RWY 18R (CAT II)
HUNTSVILLE INTL-CARL T JONES FIELD (HSV)

MISSED APPROACH: Climb to 1300 then climbing right turn to 3000 on heading 270° and RQZ R-230 to JUVLO INT/RQZ 28.7 DME and hold.

UNICOM
122.95

SE-4, 03 DEC 2020 to 31 DEC 2020

HIRL Rwy 18L-36R and 18R-36L **L**

CATEGORY II ILS - SPECIAL AIRCREW
& AIRCRAFT CERTIFICATION REQUIRED