

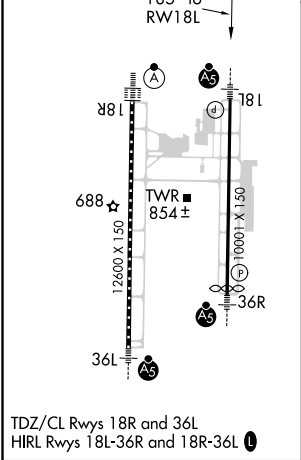
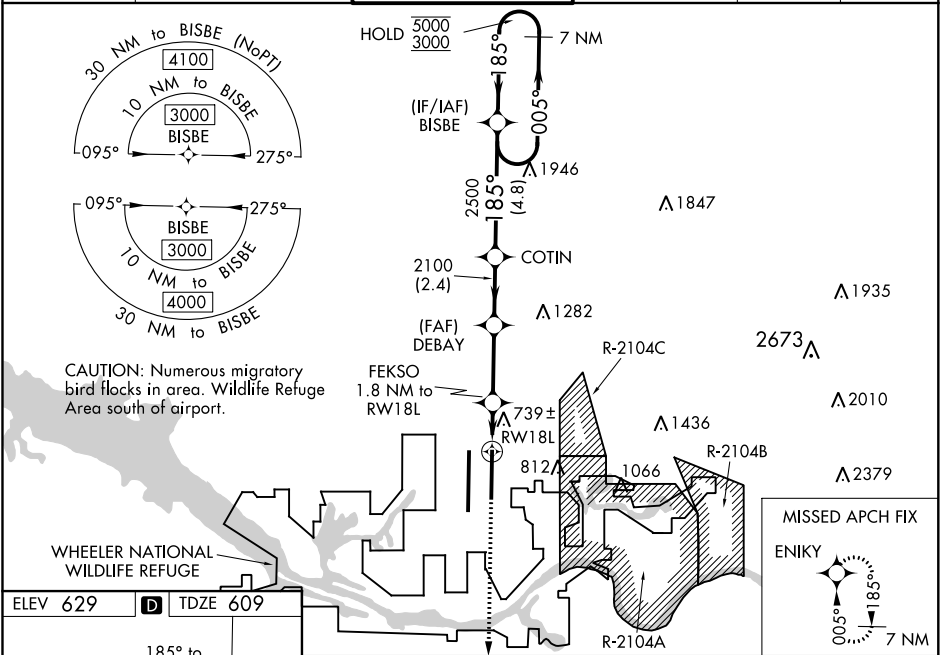
WAAS CH 72906 W18A	APP CRS 185°	Rwy Idg TDZE 609 Apt Elev 629	9801
--	------------------------	---	-------------


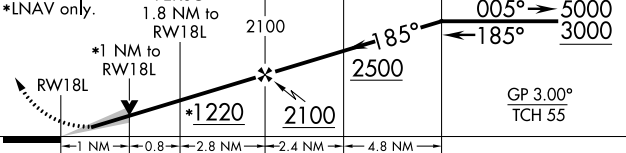

RNAV (GPS) RWY 18L

HUNTSVILLE INTL-CARL T JONES FIELD (HSV)

RNP APCH. ▼ For uncompensated Baro-VNAV systems, LNAV/VNAV NA below -10°C or above 54°C. ▲ Circling NA for Cats C/D/E east of Rwy 18L-36R. For inop ALS, increase LPV Cat E visibility to RVR 4000, LNAV/VNAV Cat E visibility to 1¼ SM, and LNAV Cat E visibility to RVR 6000. Simultaneous approach authorized. LNAV procedure NA during simultaneous operations. Use of FD or AP required during simultaneous operations. ** RVR 1800 authorized with use of FD or AP or HUD to DA. ASR	MALSR AS	MISSED APPROACH: Climb to 3000 direct ENIKY and hold.
--	-------------	--

ATIS 121.25	HUNTSVILLE APP CON ★ 125.6 354.1	HUNTSVILLE TOWER ★ 127.6 (CTAF) 0 350.35	GND CON 121.9 269.525	CLNC DEL 120.35	UNICOM 122.95
-----------------------	--	--	---------------------------------	---------------------------	-------------------------



3000 ↑	ENIKY 	VGSI and RNAV glidepath not coincident (VGSI Angle 3.00/TCH 73).			7 NM Holding Pattern	
*LNAV only.		FEKSO 1.8 NM to RW18L	DEBAY 2100	COTIN	BISBE	
						
CATEGORY	A	B	C	D	E	
LPV DA**	809/24 200 (200-½)					
LNAV/ VNAV DA	1039/40 430 (500-¾)					
LNAV MDA	1000/24 391 (400-½)		1000/35 391 (400-¾)			
 CIRCLING	1160-1 531 (600-1)		1160-1½ 531 (600-1½)	1240-2 611 (700-2)	1260-2¼ 631 (700-2¼)	