

WAAS CH 70538 W17A	APP CRS 168°	Rwy Idg 5010 TDZE 943 Apt Elev 951
--	------------------------	---

RNAV (GPS) RWY 17

JACKSON COUNTY (JCA)

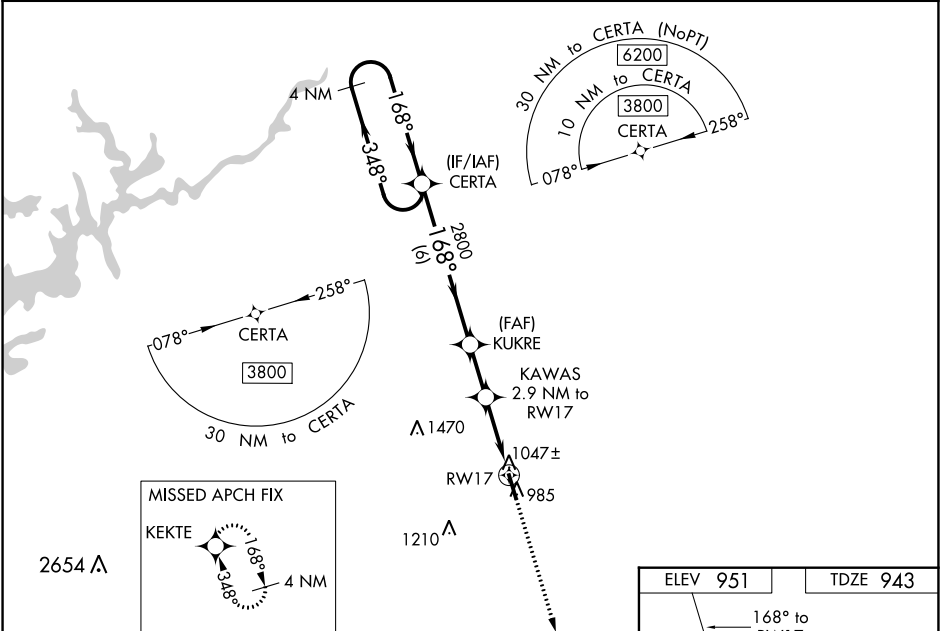
▼

▲

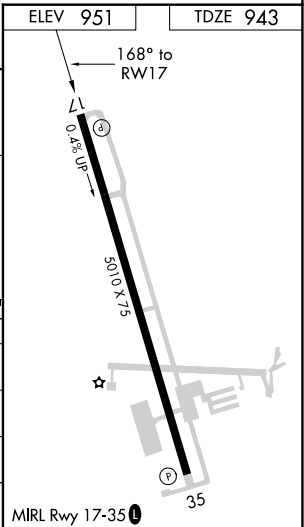
For uncompensated Baro-VNAV systems, LNAV/VNAV NA below -16°C (4°F) or above 53°C (128°F). Circling NA for Cat D west of Rwy 17-35. Baro-VNAV and VDP NA when using Winder altimeter setting. DME/DME RNP-0.3 NA. Helicopter visibility reduction below ¾ SM NA. When local altimeter setting not received, use Winder altimeter setting: increase LPV DA to 1310 feet and increase LNAV/VNAV DA to 1363 feet and all MDA 40 feet; increase LNAV/VNAV visibility all Cats and LNAV Cat C visibility ½ mile; increase Circling Cat C visibility ¼ mile.

MISSED APPROACH: Climb to 3800 direct KEKTE and hold.

AWOS-3PT 118.125	ATLANTA APP CON★ 132.475 291.1	UNICOM 122.8 (CTAF) 0
----------------------------	--	--



4 NM Holding Pattern		VGSIs and RNAV glidepath not coincident (VGS Angle 3.00/TCH 56).		3800	KEKTE
3800 ← 348°		CERTA		↑	★
168° →		KUKRE 2800		*LNAV only	
GP 3.50°		KAWAS 2.9 NM to RWY17		*1 NM to RWY17	
TCH 60		*2060		RWY17	
		6 NM		2 NM	
				1.9 NM	
				1 NM	
CATEGORY	A	B	C	D	
LPV DA	1279-1		336 (400-1)	NA	
LNAV/VNAV DA	1332-1½		389 (400-1½)	NA	
LNAV MDA	1320-1		377 (400-1)		
CIRCLING	1440-1	489 (500-1)	1520-1½ 569 (600-1½)	1520-2 569 (600-2)	



SE-4, 03 DEC 2020 to 31 DEC 2020

SE-4, 03 DEC 2020 to 31 DEC 2020