
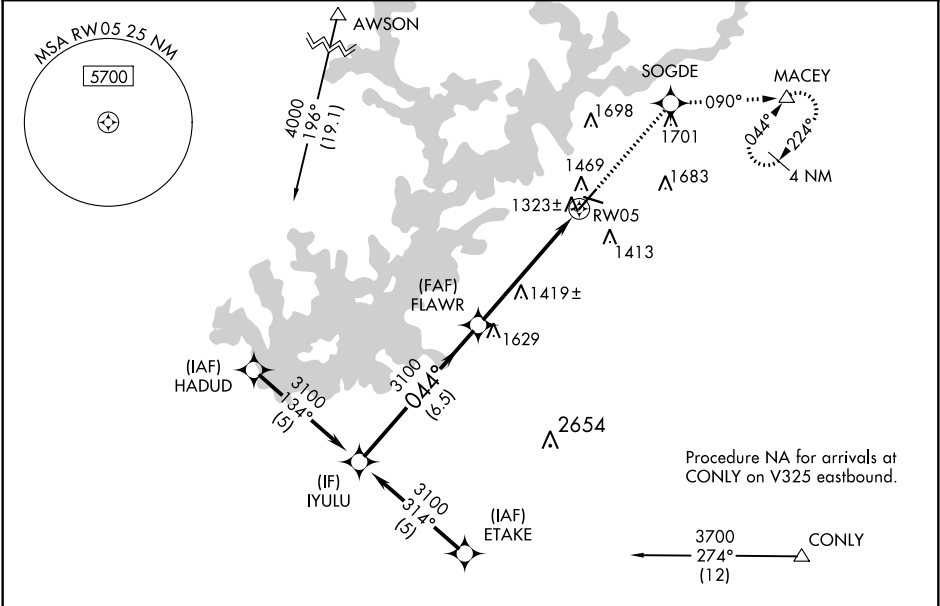


WAAS CH <b>42605</b> <b>W05A</b>	APP CRS <b>044°</b>	Rwy Idg TDZE <b>1275</b> Apt Elev <b>1277</b>
--	------------------------	---

**RNAV (GPS) RWY 5**  
LEE GILMER MEMORIAL (GVL)

RNP APCH.  For uncompensated Baro-VNAV systems, LNAV/VNAV NA below -17°C or above 46°C. When local altimeter setting not received, use Jefferson altimeter setting: increase all DA/MDA 80 feet; increase LPV and LNAV/VNAV all Cnts visibilities ¼ SM, LNAV Cnt D and Circling Cat C/D visibility ¼ SM. Baro-VNAV and VDP NA when using Jefferson altimeter setting. Circling Rwy 11, 29 NA at night.	MALSRL 	MISSED APPROACH: Climb to 4000 direct SOGDE and on 090° track to MACEY and hold, continue climb-in-hold to 4000.
--	---	---

ASOS <b>126.475</b>	ATLANTA APP CON ★ <b>132.475 291.1</b>	GCO <b>121.725</b>	UNICOM <b>123.075 (CTAF) 0</b>
------------------------	---	-----------------------	-----------------------------------



ELEV 1277		TDZE 1275	
VGSI and RNAV glidepath not coincident (VGSI Angle 3.00/TCH 30).			
Procedure Turn NA	IYULU	FLAWR	SOGDE
GP 3.00° TCH 43	3100	044°	090° tr
		3100	MACEY
	6.5 NM	4 NM	1.5 NM
CATEGORY	A	B	C
LPV DA	1525-1 250 (300-1)		
LNAV/VNAV DA	1760-1¾ 485 (500-1¾)		
LNAV MDA	1780-1 505 (600-1)	1780-1½ 505 (600-1½)	
CIRCLING	1880-1 603 (700-1)	1880-1¾ 603 (700-1¾)	2060-2½ 783 (800-2½)

HIRL Rwy 5-23