

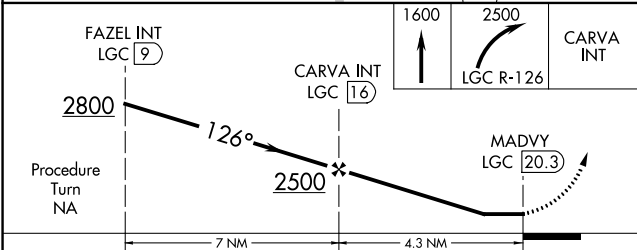
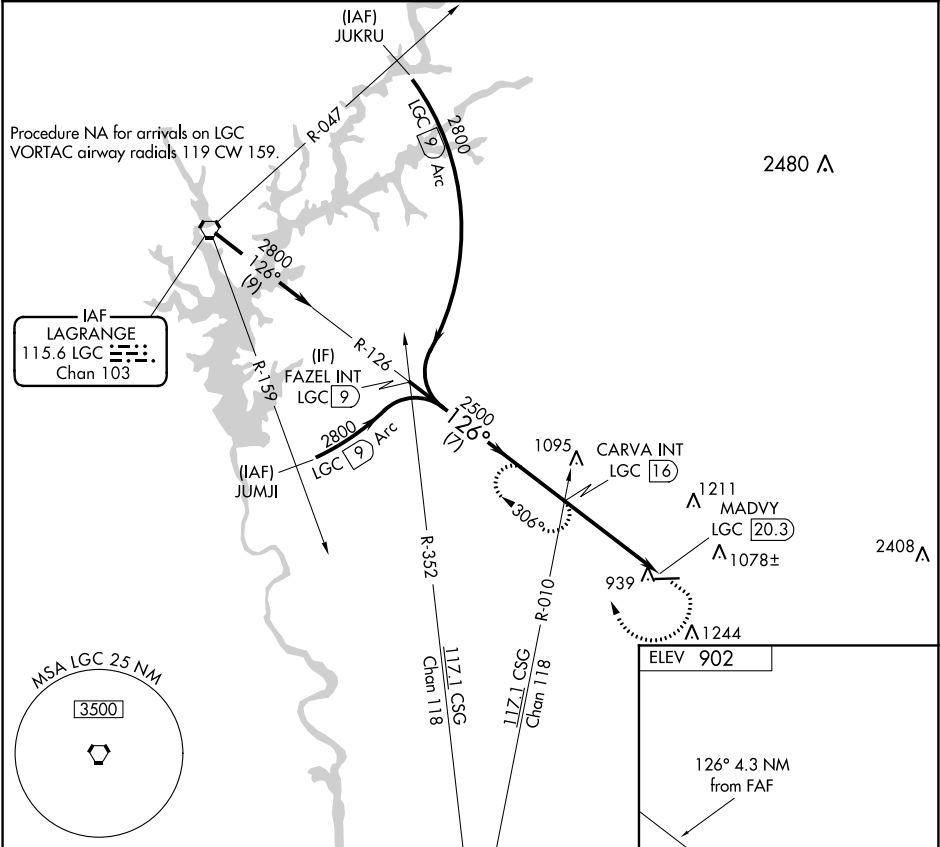
VORTAC LGC	APP CRS	Rwy Idg	N/A
115.6	126°	TDZE	N/A
Chan 103		Apt Elev	902

VOR-A

HARRIS COUNTY (PIM)

<div><div>▼</div><div>▲</div></div> <div>When local altimeter setting not received, use LaGrange altimeter setting. Circling Rwy 27 NA at night.</div>	MISSED APPROACH: Climb to 1600 then climbing right turn to 2500 on LGC VORTAC R-126 to CARVA INT/LGC 16 DME and hold.
--	---

AWOS-3PT	LGC AWOS-3	ATLANTA APP CON*	CLNC DEL	GCO	UNICOM
120.275	126.325	124.2 323.1	127.7	121.725	122.8 (CTAF) 0



ELEV 902	
MIRL Rwy 9-27 0	
FAF to MAP 4.3 NM	
Knots	60 90 120 150 180
Min:Sec	4:18 2:52 2:09 1:43 1:26

CATEGORY	A	B	C	D
CIRCLING	1480-1 578 (600-1)	1480-1¼ 578 (600-1¼)	1480-1½ 578 (600-1½)	1660-2½ 758 (800-2½)