

LOC I-VDI	APP CRS	Rwy Idg	6002
110.3	249°	TDZE	273
		Apt Elev	274

ILS or LOC RWY 25
VIDALIA RGNL (VDI)

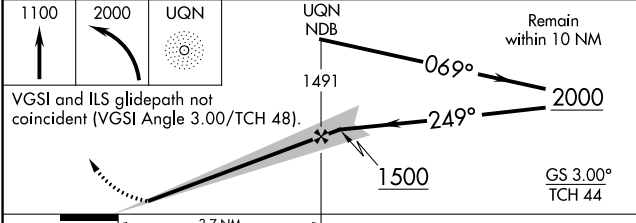
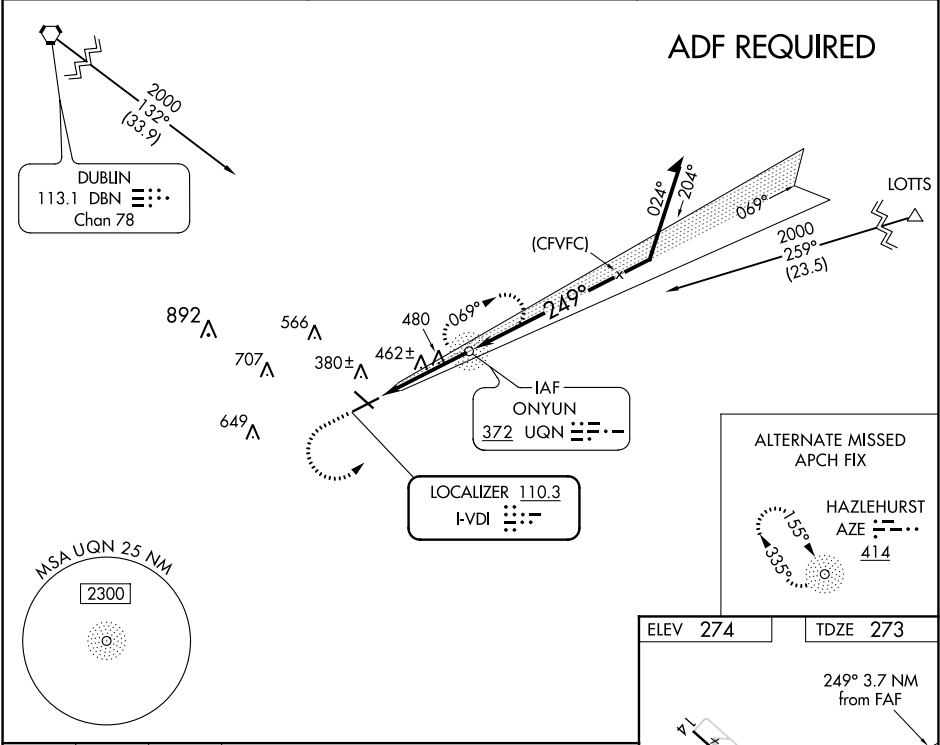
⚠ NA

When local altimeter setting not received, use Baxley altimeter setting and increase all DAs 77 feet and all MDAs 80 feet, increase S-LOC 25 Cat C/D visibility 1/4 mile, Circling Cat C/D visibility 1/4 mile. For inop MALS, increase S-LOC 25 Cat C/D visibility to 1 1/2 mile. For inop MALS, when using Baxley altimeter setting increase S-ILS 25 all Cats visibility to 1/2 mile. Night landing Rwy 32 NA. ADF required.

MALS

MISSED APPROACH: Climb to 1100 then climbing left turn to 2000 direct UQN NDB and hold.

AWOS-3 119.925	JACKSONVILLE CENTER 127.575 269.025	UNICOM 122.8 (CTAF) 0
-------------------	--	---------------------------------



CATEGORY	A	B	C	D
S-ILS 25	473-1/2 200 (200-1/2)			
S-LOC 25	740-1/2	467 (500-1/2)	740-1	467 (500-1)
C CIRCLING	740-1	466 (500-1)	920-1 3/4 646 (700-1 3/4)	1060-2 1/2 786 (800-2 1/2)

ELEV 274 TDZE 273

249° 3.7 NM from FAF

5002 X 75
304
6002 X 100

HIRL Rwy 7-25 **0**
REIL Rwy 7 and 25

FAF to MAP 3.7 NM

Knots	60	90	120	150	180
Min:Sec	3:42	2:28	1:51	1:29	1:14

SE-4, 03 DEC 2020 to 31 DEC 2020

SE-4, 03 DEC 2020 to 31 DEC 2020