

WAAS CH <b>69609</b> <b>W25A</b>	APP CRS <b>249°</b>	Rwy Idg TDZE <b>273</b> Apt Elev <b>274</b>	<b>6002</b>
--	------------------------	---	-------------

RNAV (GPS) RWY 25  
VIDALIA RGNL (VDI)

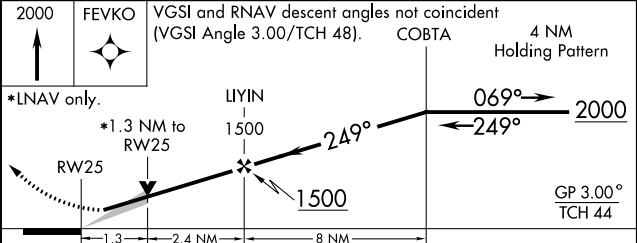
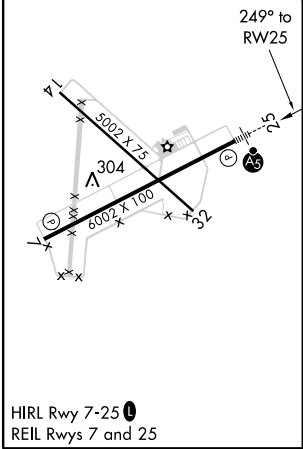
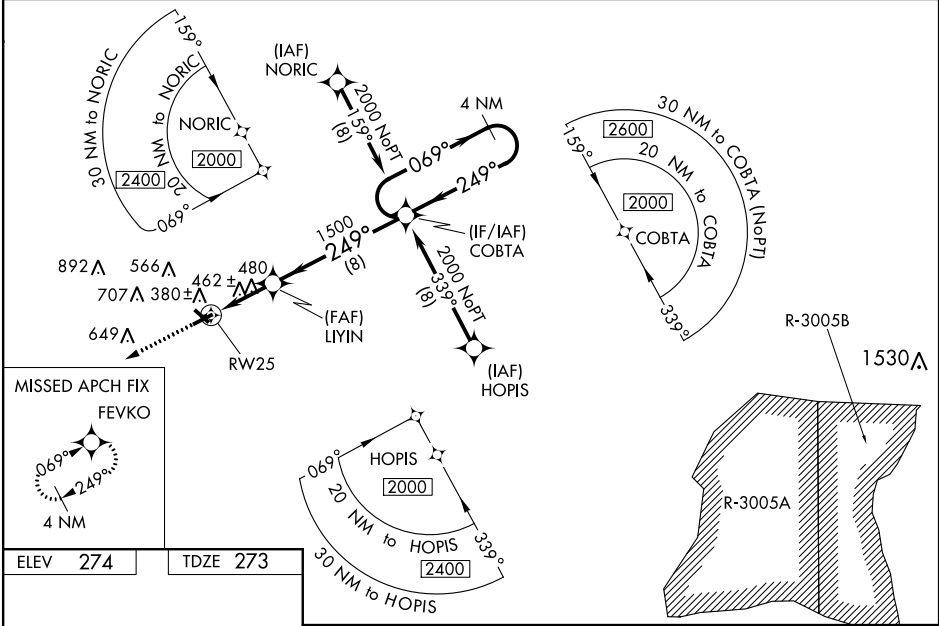
▼ DME/DME RNP-0.3 NA. Night Landing Rwy 32 NA. VDP and Baro-VNAV NA when using Baxley altimeter setting. When local altimeter setting not received, use Baxley altimeter setting and increase all DA 77 feet and all MDA 80 feet; increase LNAV/VNAV all Cats visibility ¼ mile, LNAV Cats C/D visibility ½ mile, and Circling Cats C/D visibility ¾ mile. For inop MALSR, increase LNAV/VNAV all Cats visibility to 1 mile and LNAV Cats C/D visibility to 1½ mile. For inop MALSR when using Baxley altimeter setting, increase LPV all Cats visibility to ¾ mile, LNAV/VNAV all Cats visibility to 1¼ mile. For uncompensated Baro-VNAV systems, LNAV/VNAV NA below -15°C (5°F) or above 54°C (130°F)

MALSR



MISSED APPROACH:  
Climb to 2000 direct  
FEVKO and hold.

AWOS-3 <b>119.925</b>	JACKSONVILLE CENTER <b>127.575 269.025</b>	UNICOM <b>122.8 (CTAF)</b>
--------------------------	---	-------------------------------



CATEGORY	A	B	C	D
LPV DA		473-½	200 (200-½)	
LNAV/VNAV DA		580-⅝	307 (400-⅝)	
LNAV MDA	740-½	467 (500-½)	740-1	467 (500-1)
CIRCLING	740-1	466 (500-1)	920-1¾ 646 (700-1¾)	1060-2½ 786 (800-2½)