

VORTAC OKW

111.0

Chan 47

APP CRS

099°

Rwy Idg

TDZE

Apt Elev

N/A

N/A

587

VOR-A

SHELBY COUNTY (EET)

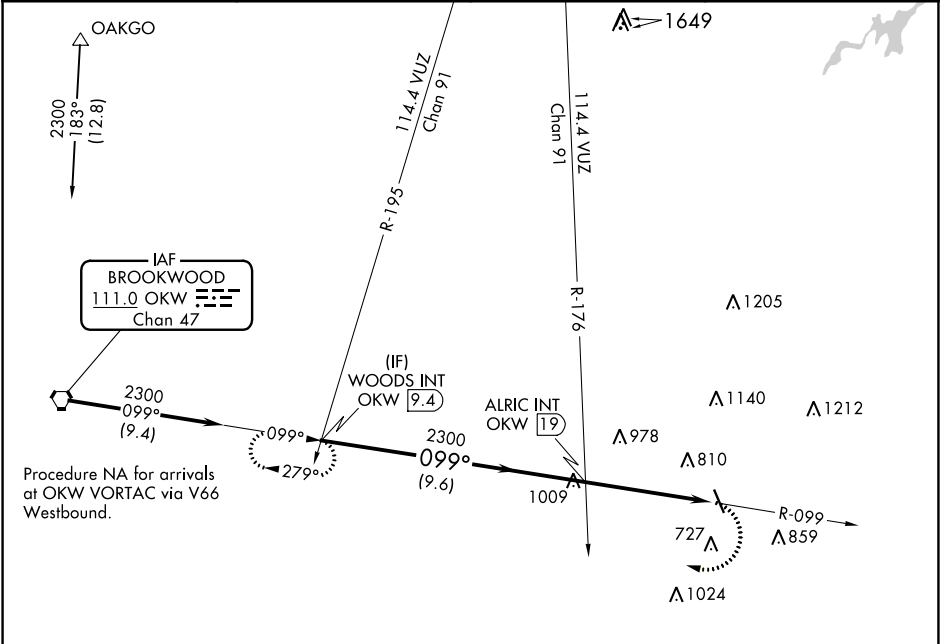
▼

▲

When local altimeter setting not received, use Birmingham altimeter setting and increase all MDA 80 feet; increase Circling Cat C and D visibility ¼ mile.

MISSED APPROACH: Climbing right turn to 2400 via heading 309° and OKW VORTAC R-099 to WOODS INT/9.4 DME and hold.

ASOS 134.325	BIRMINGHAM APP CON 123.8 256.8	GCO 121.725	UNICOM 122.7 (CTAF) 0
-----------------	-----------------------------------	----------------	--------------------------



WOODS INT OKW 9.4

2300

099°

2300

ALRIC INT OKW 19

2400

hdg 309° OKW R-099

WOODS INT

OKW 23.6

Procedure Turn NA

9.6 NM

4.6 NM

ELEV 587

0.33° UP

5000 X-75

099° 4.6 NM from FAF

MIRL Rwy 16-34

REIL Rws 16 and 34

34

CATEGORY	A	B	C	D	FAF to MAP 4.6 NM					
CIRCLING	1300-1 713 (800-1)	1300-1¼ 713 (800-1¼)	1300-2 713 (800-2)	1300-2¼ 713 (800-2¼)	Knots	60	90	120	150	180
					Min:Seq	4:36	3:04	2:18	1:50	1:32