

WAAS CH 50137 W25A	APP CRS 254°	Rwy Idg TDZE 394 Apt Elev 397
--	------------------------	---

RNAV (GPS) RWY 25

TROY MUNI AT N KENNETH CAMPBELL FIELD (TOI)

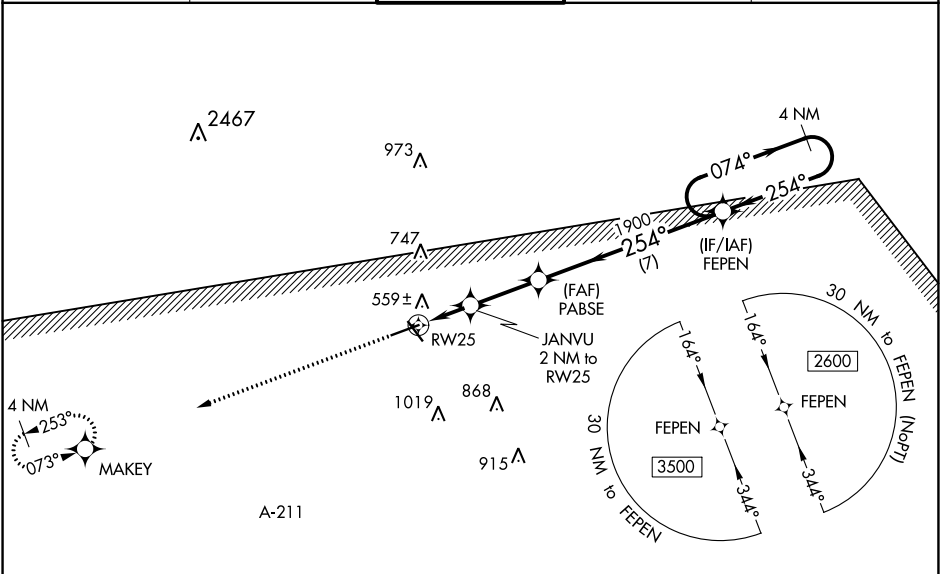
RNP APCH.

ASR/PAR

For uncompensated Baro-VNAV systems, LNAV/VNAV NA below -7°C (20°F) or above 54°C (130°F). Baro-VNAV and VDP NA when using Montgomery Rgnl (Dannelly Field) altimeter setting. Rwy 25 helicopter visibility reduction below ¾ SM NA. Circling to Rwy 14, 32 NA at night. When local altimeter setting not received, use Montgomery Rgnl (Dannelly Field) altimeter setting and increase LPV DA to 747 and all visibilities ¼ SM, LNAV/VNAV DA to 840 and visibilities ⅓ SM, and all MDA 100 feet; increase LNAV Cals C and D and Circling Cat C visibility ¼ SM.

MISSED APPROACH:
Climb to 2200 direct
MAKEY and hold.

ATIS 120.925	CAIRNS APP CON ★ 121.1 319.25	TROY TOWER ★ 124.3 (CTAF) 0 306.9	GND CON 121.9 294.7	UNICOM 122.8
------------------------	---	---	-------------------------------	------------------------



2200 MAKEY

*LNAV only.

JANVU 2 NM to RW25

PABSE 1900

FEPEN 4 NM Holding Pattern

074° 2600

254° 1900

254° to RW25

GP 3.00° TCH 45

1.2 NM 0.8 NM 2.6 NM 7 NM

CATEGORY	A	B	C	D
LPV DA		647-7/8	253 (300-7/8)	
LNAV/VNAV DA		740-1 1/8	346 (400-1 1/8)	
LNAV MDA	820-1	426 (500-1)	820-1 1/4	426 (500-1 1/4)
CIRCLING	1000-1	603 (700-1)	1300-2 3/4 903 (1000-2 3/4)	1380-3 983 (1000-3)

ELEV 397 TDZE 394

MIRL Rwy 7-25 and 14-32

The diagram shows the TWR 471 and 6197 X 100 runway layout. It includes the 254° to RW25 angle and the 0.5° UP angle.