

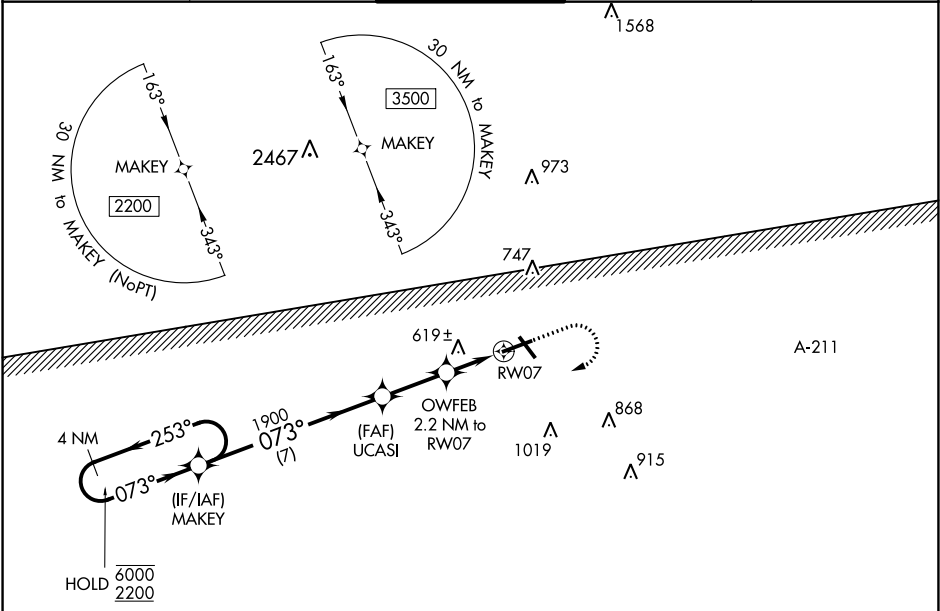
WAAS CH 82006 W07A	APP CRS 073°	Rwy Idg TDZE 389 Apt Elev 397
--	------------------------	---

RNAV (GPS) RWY 7

TROY MUNI AT N KENNETH CAMPBELL FIELD (TOI)

RNP APCH.		MISSED APPROACH: Climb to 1300 then climbing right turn to 2200 direct MAKEY and hold.		
ASR/PAR				

ATIS 120.925	CAIRNS APP CON★ 121.1 319.25	TROY TOWER★ 124.3 (CTAF) 0 306.9	GND CON 121.9 294.7	UNICOM 122.8
------------------------	--	--	-------------------------------	------------------------



ELEV 397		TDZE 389		
<div><div><div>4 NM Holding Pattern</div><div>6000 ← 253°</div><div>2200 → 073°</div><div>GP 3.00°</div><div>TCH 44</div></div><div><div>MAKEY</div><div>UCASI 1900</div><div>OWFEB 2.2 NM to RW07</div><div>*1120</div><div>RW07</div><div>1.4 NM</div></div><div><div>1300</div><div>2200</div><div>MAKEY</div><div>*LNAV only.</div></div><div><div>7 NM</div><div>2.4 NM</div><div>0.8 NM</div><div>1.4 NM</div></div></div>				
CATEGORY	A	B	C	D
LPV DA	637-7/8		248 (300-7/8)	
LNAV/VNAV DA	702-1 1/8		313 (400-1 1/8)	
LNAV MDA	880-1 491 (500-1)		880-1 3/8 491 (500-1 3/8)	
CIRCLING	1000-1 603 (700-1)		1300-2 3/4 903 (1000-2 3/4) 1380-3 983 (1000-3)	
MIRL Rwy 7-25 and 14-32 0				

073° to RW07

6197 X 100

502 X 100-5

0.6° Up

TWR 471

RNAV (GPS) RWY 7

SE-4, 03 DEC 2020 to 31 DEC 2020

SE-4, 03 DEC 2020 to 31 DEC 2020