


WAAS CH <b>65801</b> <b>W14A</b>	APP CRS <b>140°</b>	Rwy Idg TDZE Apt Elev	<b>5496</b> <b>709</b> <b>709</b>
--	------------------------	-----------------------------	---

RNAV (GPS) RWY 14

DALTON MUNI (DNN)

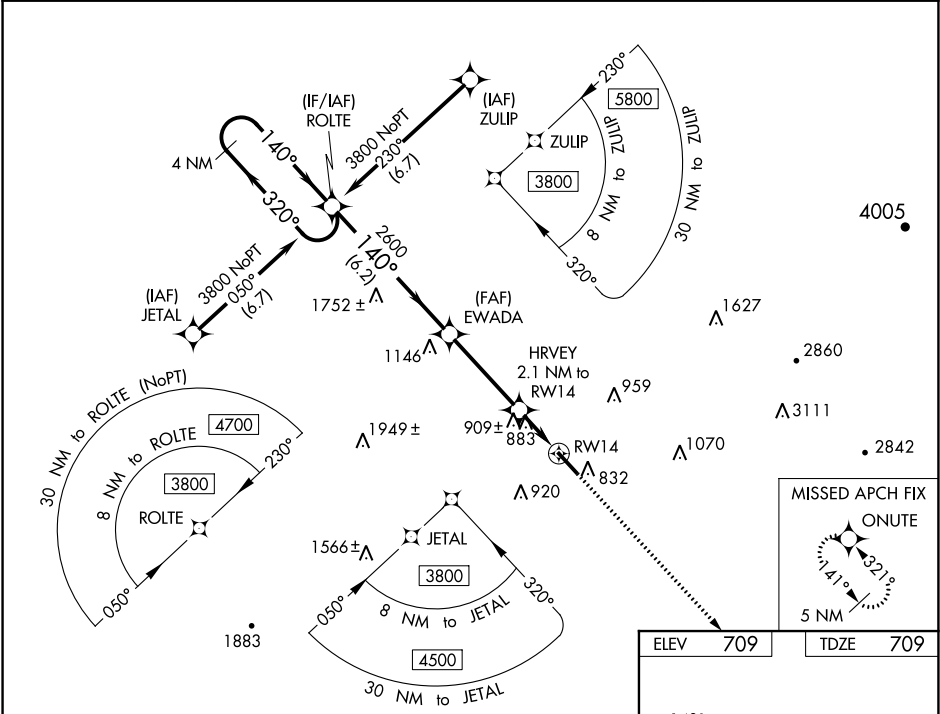
**⚠** Circling to Rwy 32 NA at night. For uncompensated Baro-VNAV systems, LNAV/VNAV NA below -16°C (4°F) or above 54°C (130°F).  
**⚠** DME/DME RNP-0.3 NA. Rwy 14 helicopter visibility reduction below ¾ SM NA. Inop table does not apply to LPV.

MALSR

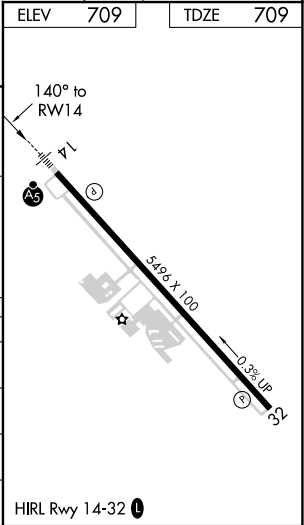


MISSED APPROACH: Climb to 4500 direct ONUTE and hold, continue climb-in-hold to 4500.

AWOS-3PT <b>127.65</b>	CHATTANOOGA APP CON ★ <b>125.1 379.1</b>	CLNC DEL <b>120.25</b>	UNICOM <b>122.975 (CTAF) 0</b>
---------------------------	---	---------------------------	-----------------------------------



4 NM Holding Pattern		VGSi and RNAV glidepath not coincident (VGSi Angle 3.00/TCH 55).		4500	ONUTE
3800		ROLTE		2600	HRVEY 2.1 NM to RW14
GP 3.00° TCH 50		140°		*1420	*1.2 NM to RW14 *LNAV only
		6.2 NM		3.7 NM	0.9 NM
				1.2 NM	
CATEGORY		A	B	C	D
LPV DA		959-¾		250 (300-¾)	
LNAV/VNAV DA		1173-1½		464 (500-1½)	
LNAV MDA		1160-¾	451 (500-¾)	1160-7/8	451 (500-7/8)
<b>C</b> CIRCLING		1220-1	511 (600-1)	1260-1½	1420-2¼
				551 (600-1½)	711 (800-2¼)



SE-4, 03 DEC 2020 to 31 DEC 2020

SE-4, 03 DEC 2020 to 31 DEC 2020