


WAAS CH 81829 W32A	APP CRS 320°	Rwy Idg TDZE Apt Elev	5701 179 187
--	------------------------	-----------------------------	---

RNAV (GPS) RWY 32

STATESBORO-BULLOCH COUNTY (TBR)

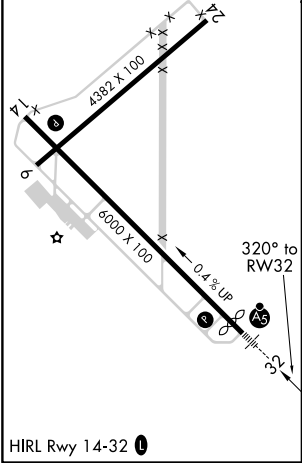
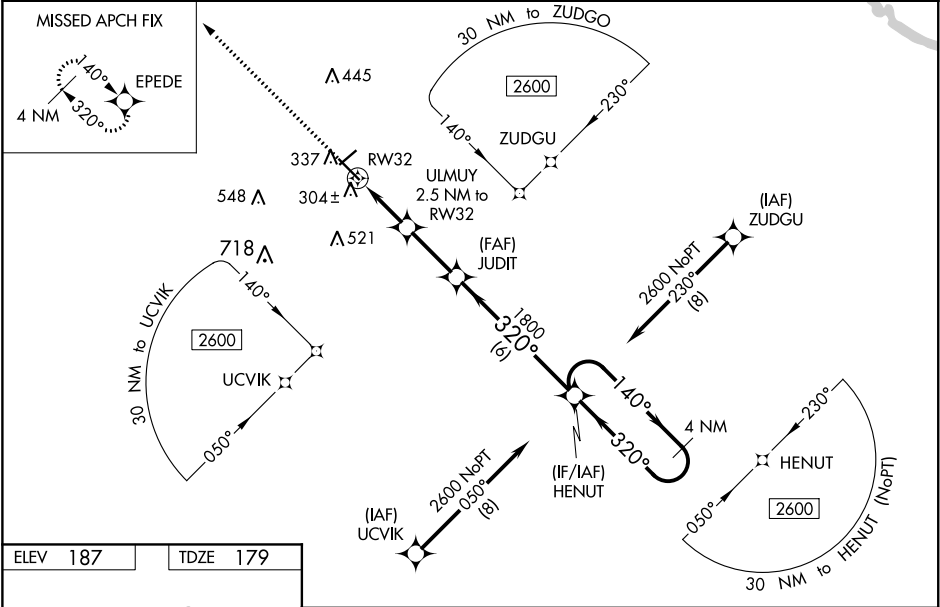
⚠ Inop table does not apply to LPV. For uncompensated Baro-VNAV systems, LNAV/VNAV NA below -15°C (5°F) or above 54°C (130°F). DME/DME RNP-0.3 NA. Helicopter visibility reduction below ¾ SM NA. When local altimeter not received, use Sylvania altimeter setting and increase all DAs 28 feet and all MDAs 40 feet, increase LNAV/VNAV visibility all Cats and LNAV Cats C/D visibility ¼ mile, and increase Circling Cat C visibility ¼ mile. For inop MALSRS, increase LNAV Cat A/B visibility to 1 mile, and Cat C/D visibility to 1½ miles. For inop MALSRS when using Sylvania altimeter setting, increase LNAV Cat A/B visibility to 1 mile. Baro-VNAV and VDP NA when using Sylvania altimeter setting.

MALSRS



MISSED APPROACH:
Climb to 2600 direct
EPEDE and hold.

AWOS-3 119.025	SAVANNAH APP CON★ 118.4 354.0	UNICOM 122.725 (CTAF) 1
--------------------------	---	-----------------------------------



2600	EPEDE	ULMUY 2.5 NM to RW32	JUDIT 1800	HENUT	4 NM Holding Pattern
*LNAV only.		*1.1 NM to RW32	*1000		GP 3.00° TCH 49
1.1	1.4	2.5 NM	6 NM		
CATEGORY	A	B	C	D	
LPV DA		432-¾	253 (300-¾)		
LNAV/VNAV DA		583-1	404 (400-1)		
LNAV MDA		560-¾	381 (400-¾)		
CIRCLING	640-1 453 (500-1)	840-1 653 (700-1)	840-1¾ 653 (700-1¾)	860-2¼ 673 (700-2¼)	