

WAAS CH 97603 W14A	APP CRS 135°	Rwy Idg TDZE 327 Apt Elev 327	6021
--	------------------------	---	-------------

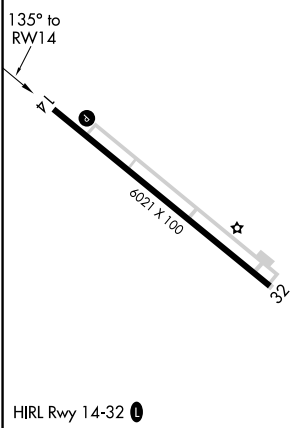
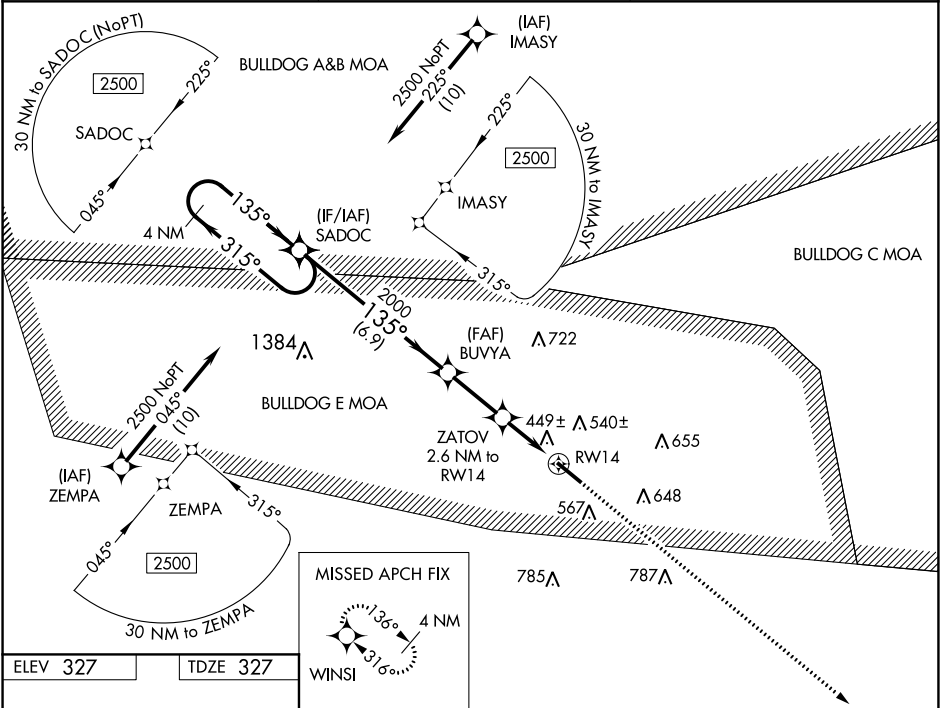
RNAV (GPS) RWY 14

EAST GEORGIA RGNL (SBO)

▼ Baro-VNAV and VDP NA when using Vidalia altimeter setting. For uncompensated Baro-VNAV systems, LNAV/VNAV NA below -15°C (5°F) or above 54°C (130°F). When local altimeter setting not received, use Vidalia altimeter setting and increase LPV DA to 708, LNAV/VNAV DA to 698, and all MDA 80 feet, increase LPV and LNAV/VNAV all Cats visibility ¼ SM, LNAV Cats C/D visibility ¾ SM, Circling Cat C visibility ½ SM, and Circling Cat D visibility ¼ SM. Rwy 14 helicopter visibility reduction below ¾ SM NA. DME /DME RNP-0.3 NA.

MISSED APPROACH:
Climb to 2500 direct
WINSI and hold.

AWOS-3 133.375	ATLANTA CENTER 127.95 343.75	UNICOM 122.975 (CTAF) 0
--------------------------	--	-----------------------------------



4 NM Holding Pattern		SADOC	2500	WINSI
2500		315°	135°	
GP 3.00° TCH 42				
2000		135°		
6.9 NM		2.5 NM	1.6 NM	1 NM
CATEGORY	A	B	C	D
LPV DA		643-1	316 (400-1)	
LNAV/VNAV DA		633-1	306 (400-1)	
LNAV MDA		700-1	373 (400-1)	
CIRCLING	900-1 573 (600-1)	920-1 593 (600-1)	920-1½ 593 (600-1½)	920-2 593 (600-2)