

WAAS CH 53727 W08A	APP CRS 081°	Rwy Idg TDZE Apt Elev	5003 201 201
--	------------------------	-----------------------------	---

RNAV (GPS) RWY 8

BAXLEY MUNI (BHC)

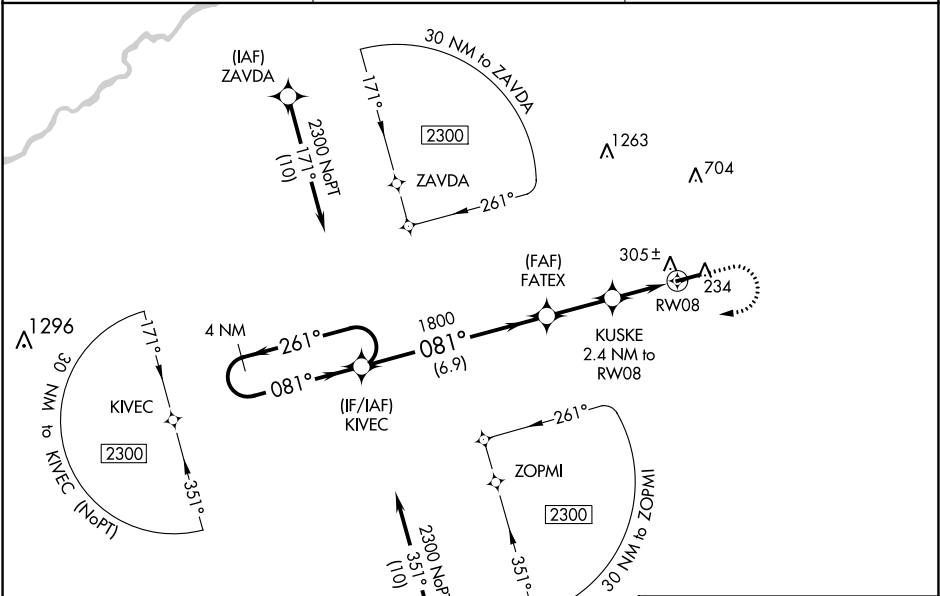
▼

▲ NA

Baro-VNAV NA when using Alma altimeter setting. For uncompensated Baro-VNAV systems, LNAV/VNAV NA below -15°C (5°F) or above 42°C (107°F). DME/DME RNP-0.3 NA. When local altimeter setting not received, use Alma altimeter setting and increase LPV DA to 513, LNAV/VNAV DA to 515 and all MDA 40 feet; increase LNAV Cats C and D visibility ½ mile. Helicopter visibility reduction below ¾ SM NA.

MISSED APPROACH:
Climb to 1200 then climbing right turn to 2300 direct KIVEC and hold.

AWOS-3PT 118.2	JACKSONVILLE CENTER 127.575 269.025	UNICOM 122.8 (CTAF) 0
--------------------------	---	--



4 NM Holding Pattern

2300 ← 261° / 081° →

GP 3.00° TCH 59

VGSI and RNAV glidepath not coincident (VGSI Angle 3.00/TCH 31).

KIVEC

FATEX 1800

KUSKE 2.4 NM to RW08

*1020

RW08

1200 ↑

2300 ↘

KIVEC

* LNAV only.

6.9 NM

2.4 NM

2.4 NM

CATEGORY	A	B	C	D
LPV DA	484-1		283 (300-1)	
LNAV/VNAV DA	486-1		285 (300-1)	
LNAV MDA	560-1		359 (400-1)	
CIRCLING	620-1 419 (500-1)	660-1 459 (500-1)	660-1½ 459 (500-1½)	760-2 559 (600-2)

ELEV 201

TDZE 201

5003 X 75

081° to RW08

MIRL Rwy 8-26

SE-4, 03 DEC 2020 to 31 DEC 2020

SE-4, 03 DEC 2020 to 31 DEC 2020