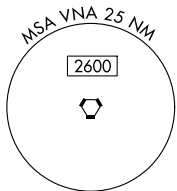



ILS or LOC RWY 36
PERRY-HOUSTON COUNTY (PXE)

MALSR

MISSED APPROACH: Climb to 1000 then climbing left turn to 3000 heading 270° and MCN VORTAC R-239 to POTAR INT/MCN 23.9 DME and hold.

UNICOM
2.725 (CTAF) **L**

VIENNA
116.5 VNA 
Chan 112

ALTERNATE MISSED
APCH FIX

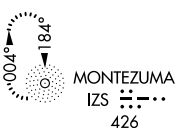
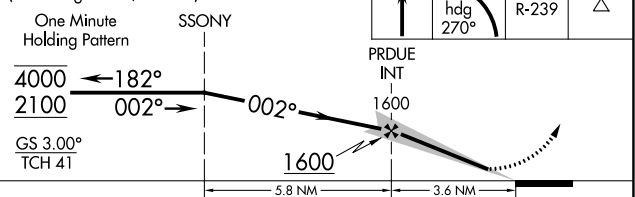


Diagram illustrating the FAF to MAP 3.6 NM leg. The diagram shows a vertical line representing the flight path. Key markers include:

- 81** (Top)
- d** (Descent point)
- 4999 X 100** (Altitude marker)
- P** (Point marker)
- 36** (Marker with star symbol)
- 002° 3.6 NM from FAF** (Angle and distance marker)
- HIRL Rwy 18-36** (Runway identifier)

FAF to MAP 3.6 NM					
Knots	60	90	120	150	180
Min:Sec	3:36	2:24	1:48	1:26	1:12

VGSI and ILS glidepath not coincident
(VGSI Angle 3.00/TCH 30).



CATEGORY	A	B	C	D
S-ILS 36	751-3/4 334 (400-3/4)			
S-LOC 36	900-3/4 483 (500-3/4)		900-1 483 (500-1)	
CIRCLING	900-1 482 (500-1)		960-1 1/2 542 (600-1 1/2)	980-2 562 (600-2)